

WAAS CH 70436 W03A	APP CRS 038°	Rwy Idg TDZE Apt Elev	6001 3976 3979
--	------------------------	-----------------------------	---

RNAV (GPS) RWY 3

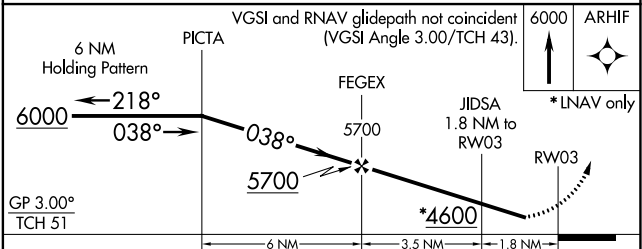
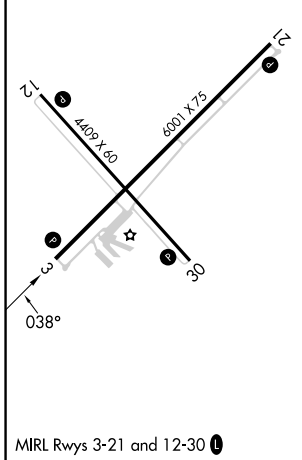
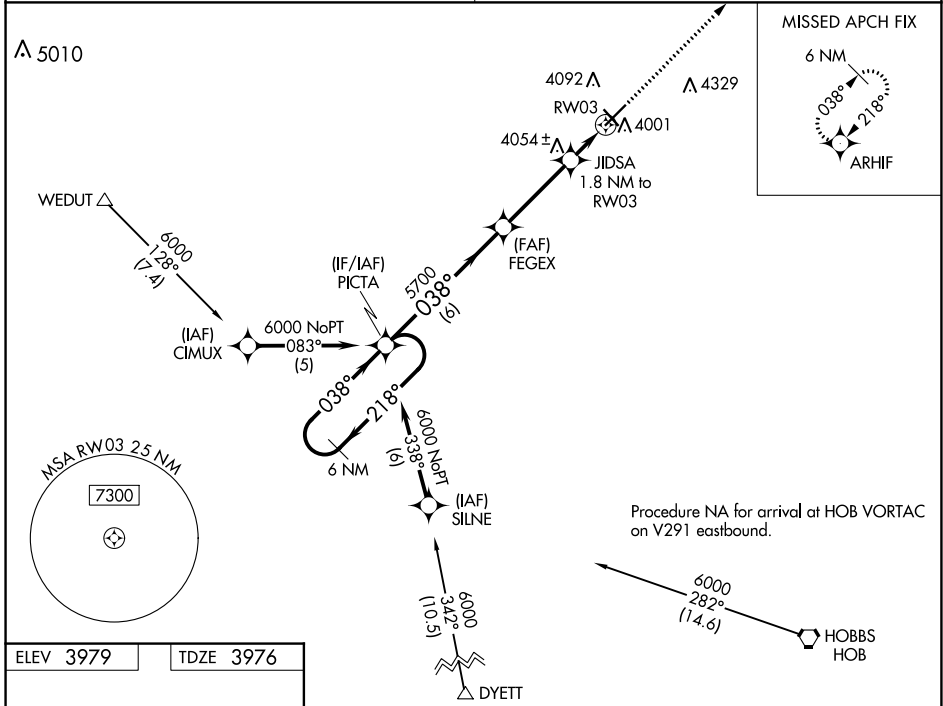
LEA COUNTY/ZIP FRANKLIN MEML (E06)

Baro-VNAV NA. DME/DME RNP-0.3 NA. Use Hobbs altimeter setting; when not received, procedure NA. Helicopter visibility reduction below 1 SM NA. Night landing: Rwy 3, 12, 30 NA.

MISSED APPROACH: Climb to 6000 direct ARHIF and hold.

FORT WORTH CENTER 133.1 298.95

UNICOM 122.8 (CTAF)



CATEGORY	A	B	C	D
LPV DA	4314-1½	338 (400-1½)		NA
LNAV/VNAV DA	4314-1½	338 (400-1½)		NA
LNAV MDA	4400-1	424 (500-1)	4400-1¼ 424 (500-1¼)	NA
C CIRCLING	4480-1	501 (600-1)	4720-2¼ 741 (800-2¼)	NA

SW-1, 08 AUG 2024 to 05 SEP 2024

SW-1, 08 AUG 2024 to 05 SEP 2024