

APP CRS	Rwy Idg	6101
181°	TDZE	5024
	Apt Elev	5024

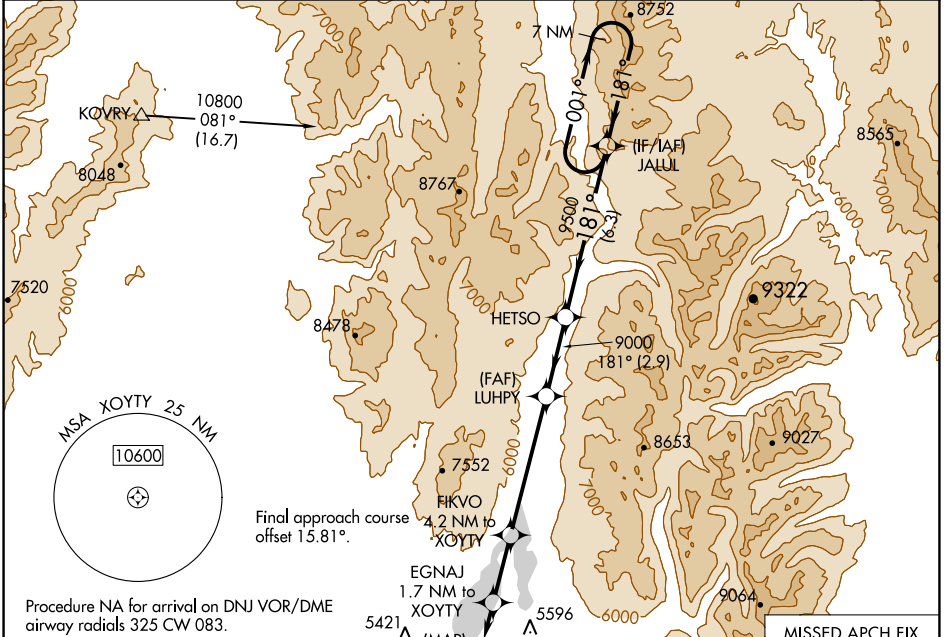
RNAV (GPS) RWY 16

MC CALL MUNI (MYL)

▼ Rwy 16 helicopter visibility reduction below 1 SM NA.
▲ DME/DME RNP-0.3 NA.
☄ -20°C Straight-in Rwy 16 NA at night, Circling Rwy 16 NA at night.

MISSED APPROACH: Climb to 11700 direct UDABE and on track 158° to PEPUC and hold, continue climb-in-hold to 11700.

ASOS 119.925	SALT LAKE CENTER 128.05 306.95	UNICOM 122.8 (CTAF) ☉
------------------------	--	--



NW-1, 03 OCT 2024 to 31 OCT 2024

NW-1, 03 OCT 2024 to 31 OCT 2024

ELEV 5024 TDZE 5024

181°

91

6101 X 75

0.3% UP

34

MIRL Rwy 16-34 **☉**

REIL Rws 16 and 34 **☉**

MISSED APCH FIX

160°

340°

7 NM

11700 UDABE tr PEPUC Visual Segment - Obstacles. JALUL 7 NM Holding Pattern

158°

158° (15.7)

5940 6940 9000 9500 10800

XOYTY EGNAJ 1.7 NM to XOYTY FIKVO 4.2 NM to XOYTY LUHPY HETSO

0.5 1.7 2.5 5.1 2.9 6.3

CATEGORY	A	B	C	D
LNAV MDA	5520-1	496 (500-1)	5520-1 $\frac{3}{8}$ 496 (500-1 $\frac{3}{8}$)	NA
C CIRCLING	5940-1 $\frac{1}{4}$	916 (1000-1 $\frac{1}{4}$)	6140-3 1116 (1200-3)	NA