

APP CRS
354°
Rwy Idg **3707**
TDZE **1560**
Apt Elev **1561**

RNAV (GPS) RWY 35
ARLEDGE FLD (F56)

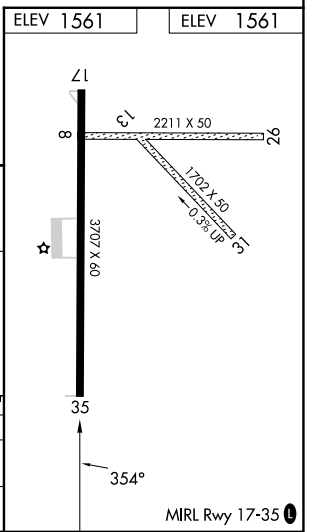
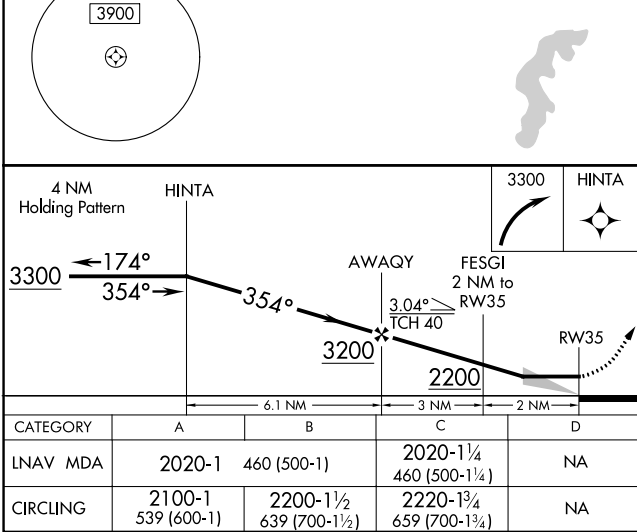
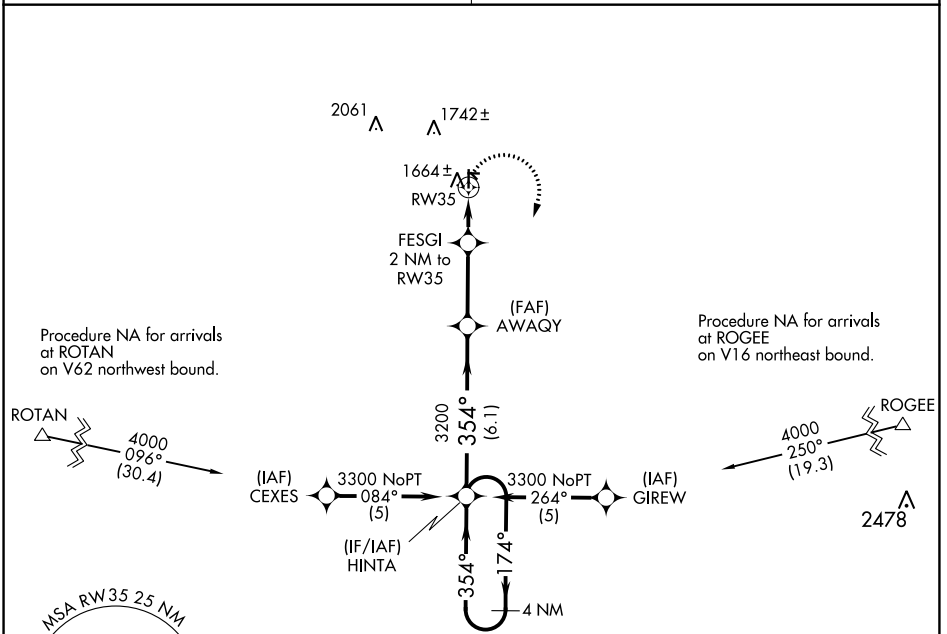
RNP APCH-GPS.

▽ Use Abilene Rgnl altimeter setting; when not received use Breckenridge altimeter setting and increase all MDAs 40 feet and visibility Cat C ¼ SM.
▲ NA Procedure NA at night. Circling NA to Rwys 8/26 and 13/31.

MISSED APPROACH: Climbing right turn to 3300 direct HINTA and hold.

ABILENE APP CON
127.2 282.3

UNICOM
122.8 (CTAF) 0



SC-2, 31 OCT 2024 to 28 NOV 2024

SC-2, 31 OCT 2024 to 28 NOV 2024