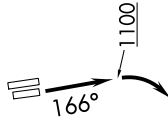


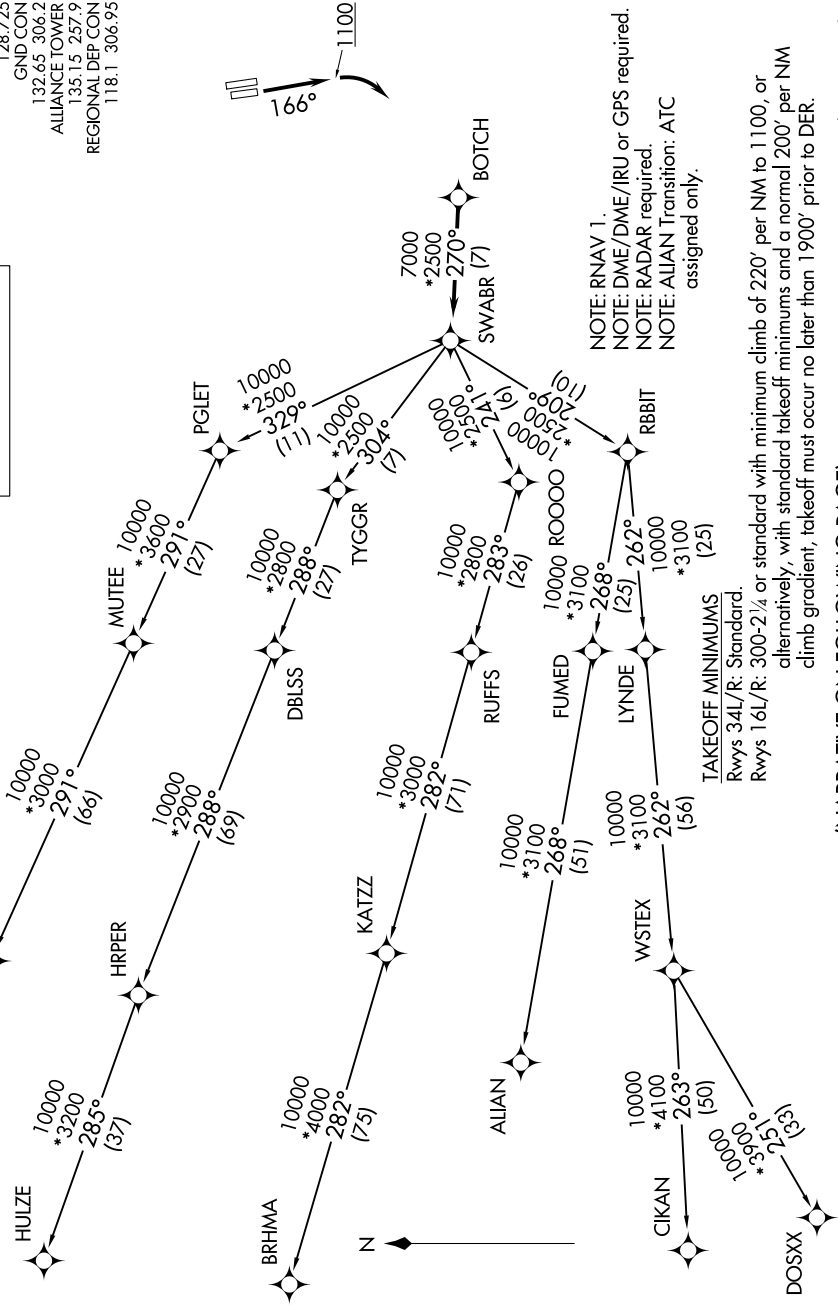
# SWABR ONE DEPARTURE (RNAV)

FORT WORTH, TEXAS

ATIS 126.925  
 CINC DEL 128.725  
 GND CON 132.65 306.2  
 ALLIANCE TOWER 135.15 257.9  
 REGIONAL DEP CON 118.1 306.95



## TOP ALTITUDE: ASSIGNED BY ATC



NOTE: RNAV 1.  
 NOTE: DME/DME/IRU or GPS required.  
 NOTE: RADAR required.  
 NOTE: ALIAN Transition: ATC assigned only.

TAKEOFF MINIMUMS (25)  
 Rwy 34L/R: Standard.  
 Rwy 16L/R: 300-2¼ or standard with minimum climb of 220' per NM to 1100, or alternatively, with standard takeoff minimums and a normal 200' per NM climb gradient; takeoff must occur no later than 1900' prior to DER.

NOTE: Chart not to scale.

(NARRATIVE ON FOLLOWING PAGE)

SC-2, 13 JUN 2024 to 11 JUL 2024

SC-2, 13 JUN 2024 to 11 JUL 2024