

WAAS CH 82541 W16B	APP CRS 166°	Rwy Idg 10600 TDZE 723 Apt Elev 723
--	------------------------	--

RNAV (GPS) RWY 16L

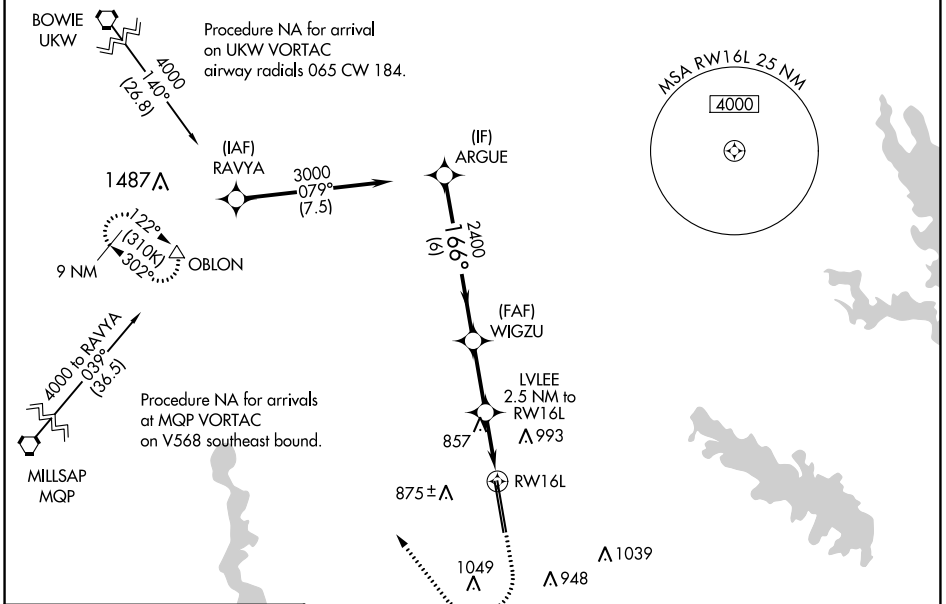
PEROT FLD/FORT WORTH ALLIANCE (A.F.W)

⚠ For uncompensated Baro-VNAV systems, LNAV/VNAV NA below -8°C (18°F) or above 54°C (130°F). Circling NA east of Rwy 16L-34R. DME/DME RNP-0.3 NA. For inop ALS, increase LPV Cat E visibility to RVR 4000, LNAV/VNAV all Cats visibility to RVR 4500 and LNAV Cat E visibility to RVR 6000.

ALSF-2

MISSED APPROACH: Climb to 1200 then climbing right turn to 3000 direct OBLON and hold.

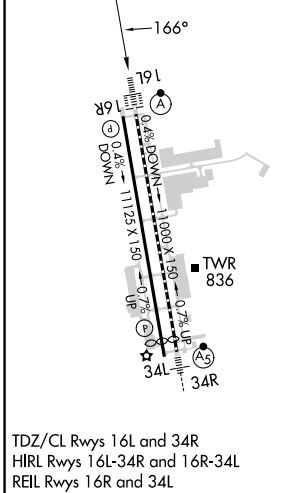
ATIS 126.925	REGIONAL APP CON 118.1 306.95	ALLIANCE TOWER 135.15 257.9	GND CON 132.65 306.2	CLNC DEL 128.725
------------------------	---	---------------------------------------	--------------------------------	----------------------------



SC-2, 08 AUG 2024 to 05 SEP 2024

SC-2, 08 AUG 2024 to 05 SEP 2024

ELEV 723	D	TDZE 723
----------	----------	----------



TDZ/CL Rws 16L and 34R
HIRL Rws 16L-34R and 16R-34L
REIL Rws 16R and 34L

	ARGUE	WIGZU	LVLEE	OBLON	
	3000	2400	2.5 NM to RW16L	△	
		2400	*1.1 NM to RW16L		
		*1560			
		6 NM	2.6 NM	1.4 NM	
			1.1 NM		
				*LNAV only.	
GP 3.00° TCH 55					
CATEGORY	A	B	C	D	E
LPV DA		923/18	200 (200-½)		
LNAV/VNAV DA		1016/24	293 (300-½)		
LNAV MDA	1120/24	397 (400-½)	1120/35	397 (400-¾)	
C CIRCLING	1160-1 437 (500-1)	1320-1 597 (600-1)	1360-1¾ 637 (700-1¾)	1380-2 657 (700-2)	1380-2¼ 657 (700-2¼)

RNAV (GPS) RWY 16L