

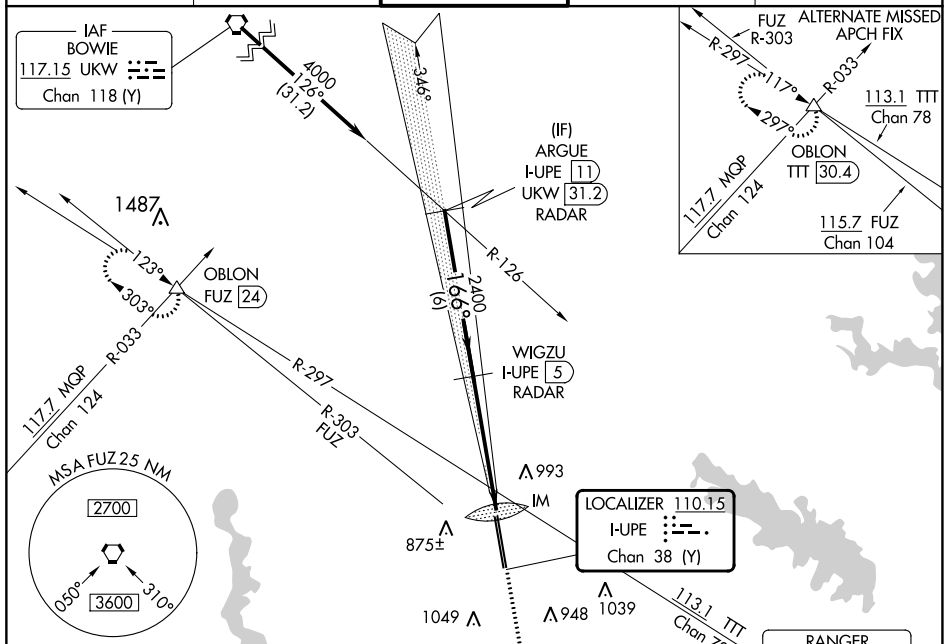
LOC/DME I-UIPE <b>110.15</b> Chan <b>38 (Y)</b>	APP CRS <b>166°</b>	Rwy Idg <b>10600</b> TDZE <b>723</b> Apt Elev <b>723</b>
---	------------------------	--

# ILS RWY 16L (CAT II & III)

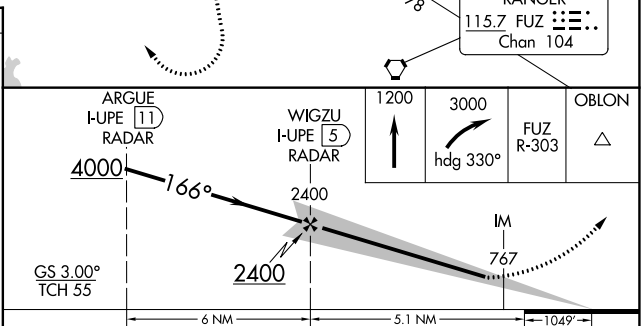
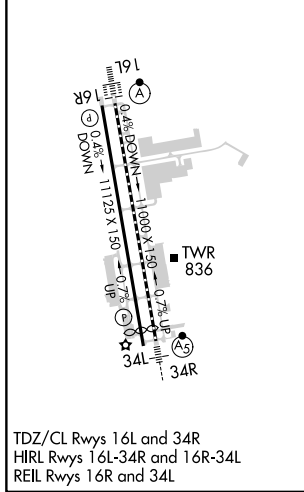
PEROT FLD/FORT WORTH ALLIANCE (AFW)

DME or RADAR required.	ALSF-2	MISSED APPROACH: Climb to 1200 then climbing right turn to 3000 on heading 330° and FUZ VORTAC R-303 to OBLON INT/FUZ 24 DME and hold.
------------------------	--------	--

ATIS <b>126.925</b>	REGIONAL APP CON <b>118.1 306.95</b>	ALLIANCE TOWER <b>135.15 257.9</b>	GND CON <b>132.65 306.2</b>	CLNC DEL <b>128.725</b>
------------------------	---	---------------------------------------	--------------------------------	----------------------------



ELEV 723	<b>D</b>	TDZE 723
----------	----------	----------



CATEGORY	A	B	C	D
S-ILS 16L	CAT II RA 101/12		100 DA 823	
S-ILS 16L	CAT III		RVR 06	

**CATEGORY II & III ILS - SPECIAL AIRCREW & AIRCRAFT CERTIFICATION REQUIRED**

SC-2, 11 JUL 2024 to 08 AUG 2024

SC-2, 11 JUL 2024 to 08 AUG 2024