

WAAS CH <b>90306</b> <b>W01A</b>	APP CRS <b>014°</b>	Rwy Idg TDZE <b>1049</b> Apt Elev <b>1071</b>	<b>6279</b>
--	------------------------	---	-------------

# RNAV (GPS) RWY 1

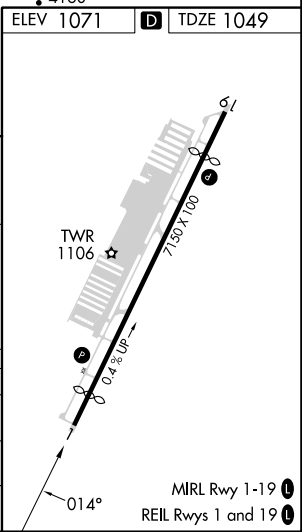
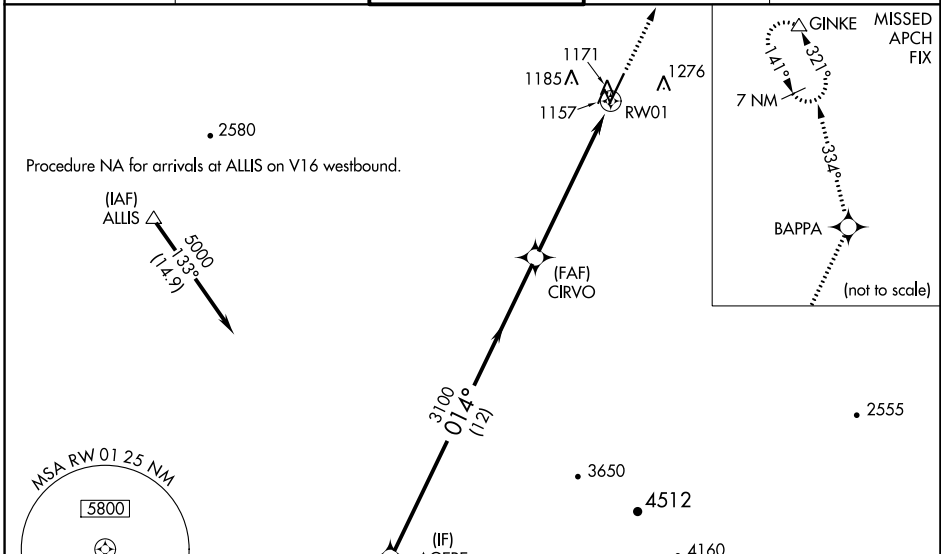
GLENDALE RGNL (GEU)

RNP APCH.

**⚠** Baro-VNAV NA when using Phoenix Sky Harbor Intl altimeter setting. For uncompensated Baro-VNAV systems, LNAV/VNAV NA below -17°C or above 47°C. When local altimeter setting not received, use Phoenix Sky Harbor Intl altimeter setting; increase LPV DA to 1438 feet; increase LNAV/VNAV DA to 1517 feet and all visibilities ¼ SM; increase all MDA 60 feet and LNAV Cat C and D visibility ¼ SM. Night landing: Rwy 1, Cat C and D operational VGSi required, remain on or above VGSi glidepath until threshold. Rwy 1 helicopter visibility reduction below ¾ SM NA.

MISSED APPROACH: Climb to 10000 direct BAPPA and on 334° track to GINKE and hold, continue climb-in-hold to 10000.

ATIS <b>119.425</b>	LUKE APP CON * <b>118.15 363.125</b>	GLENDALE TOWER * <b>121.0 (CTAF) 0</b>	GND CON <b>118.0</b>	UNICOM <b>122.95</b>
------------------------	---	---	-------------------------	-------------------------



Procedure Turn NA	AGERE	10000	BAPPA $\star$	GINKE $\Delta$
			334° tr	
5000	014°	CIRVO	RW01	
GP 3.00°	3100			
TCH 40				
	12 NM	6.2 NM		
CATEGORY	A	B	C	D
LPV DA		1378-1¼	329 (400-1¼)	
LNAV/VNAV DA		1457-1½	408 (400-1½)	
LNAV MDA	1440-1	391 (400-1)	1440-1⅛ 391 (400-1⅛)	1440-1¼ 391 (400-1¼)

SW-4, 03 OCT 2024 to 31 OCT 2024

SW-4, 03 OCT 2024 to 31 OCT 2024