

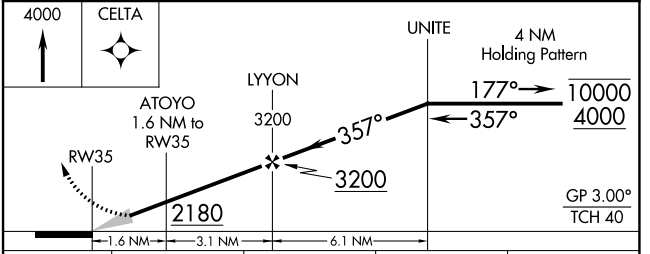
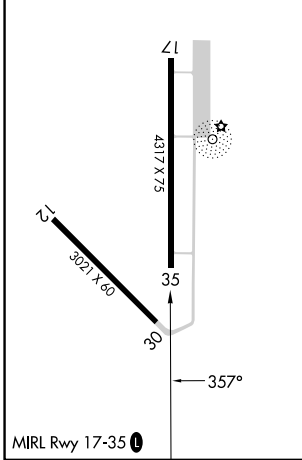
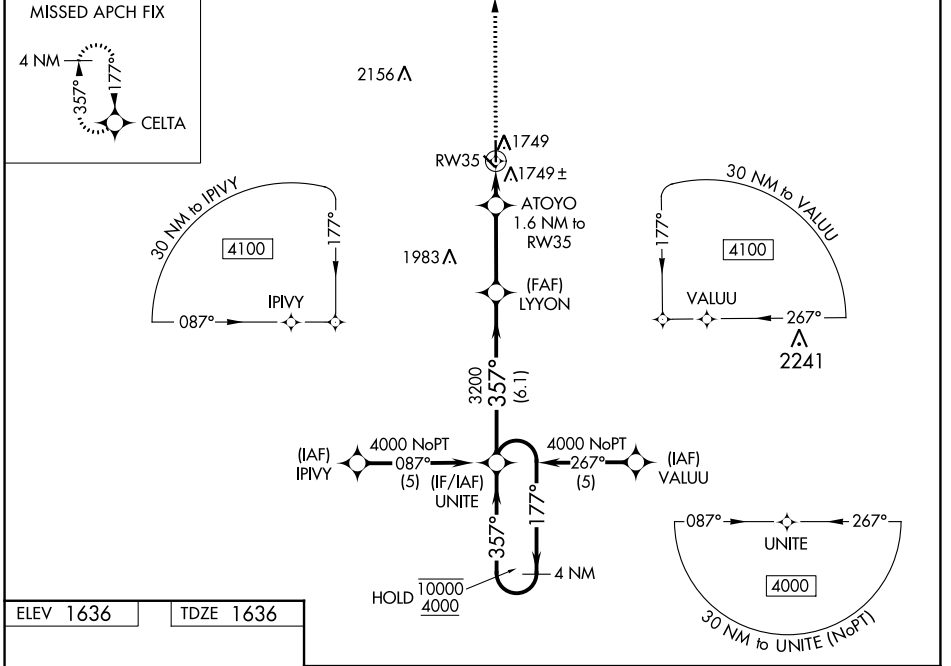
WAAS CH 93614 W35A	APP CRS 357°	Rwy Idg 4317 TDZE 1636 Apt Elev 1636
---------------------------------	------------------------	---

RNAV (GPS) RWY 35

FAIRMONT STATE (F^MZ)

RNP APCH - GPS.	MISSED APPROACH: Climb to 4000 direct CELTA and hold.
-----------------	---

JYR AWOS-3 124.175	MINNEAPOLIS CENTER 119.4 278.8	CTAF 122.9
------------------------------	--	----------------------



CATEGORY	A	B	C	D
LPV DA	1934-7/8	298 (300-7/8)		NA
LNAV/VNAV DA	2094-1 3/8	458 (500-1 3/8)		NA
LNAV MDA	2060-1	424 (500-1)		NA
C CIRCLING	2120-1	484 (500-1)		NA

NC-2, 31 OCT 2024 to 28 NOV 2024

NC-2, 31 OCT 2024 to 28 NOV 2024