


WAAS CH 40426 W29A	APP CRS 291°	Rwy ldg TDZE Apt Elev	8900 7078 7096
--	------------------------	-----------------------------	---

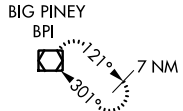
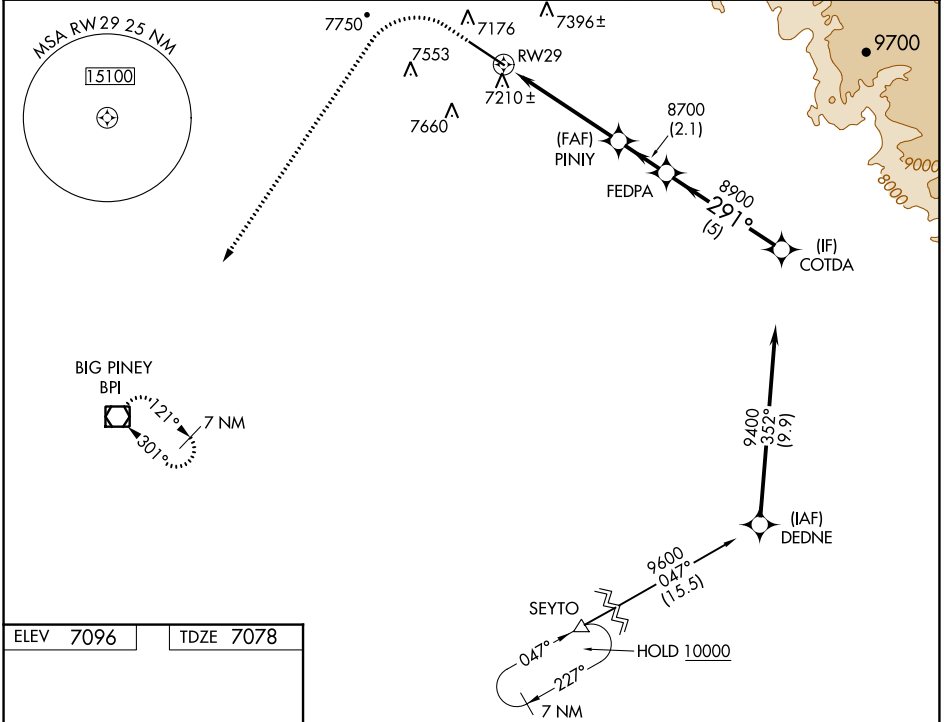
RNAV (GPS) RWY 29

RALPH WENZ FLD (PNA)

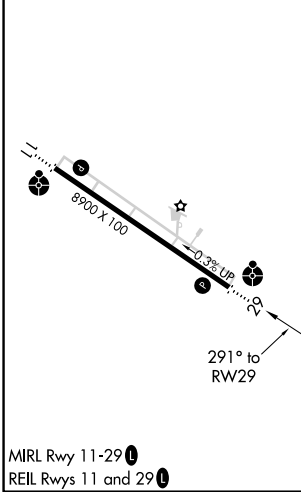
⚠ Baro-VNAV NA. When local altimeter setting not received, use Big Piney altimeter setting and increase LPV DA to 7386 feet and all visibilities ¼ SM; increase LNAV/VNAV DA to 7664 feet and all visibilities ½ SM; increase all MDA 60 feet and LNAV Cots C/D visibility ¼ SM. Circling NA south of Rwy 11/29. DME/DME RNP-0.3 NA. Helicopter visibility reduction below ¾ SM NA. VDP NA with Big Piney altimeter setting.



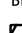
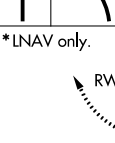
ODALS  MISSED APPROACH: Climb to 7600 then climbing left turn to 10000 direct BPI VOR/DME and hold.



AWOS-3 118.325	SALT LAKE CENTER 128.35 239.25	UNICOM 122.8 (CTAF) 
--------------------------	--	---



ELEV 7096	TDZE 7078
-----------	-----------



7600	10000	BPI	VGSI and RNAV glidepath not coincident (VGSI Angle 2.83/TCH 40).	COTDA
				
*LNAV only.		*1.5 NM to RWY29	PINIY 8700	FEDPA 8900
				9400
				GP 3.00° TCH 55
		1.5 NM	3.5 NM	2.1 NM
		5 NM		
CATEGORY	A	B	C	D
LPV DA	7328-¾ 250 (300-¾)			
LNAV/VNAV DA	7606-1¾ 528 (600-1¾)			
LNAV MDA	7600-1	522 (600-1)	7600-1½	522 (600-1½)
CIRCLING	7640-1	544 (600-1)	7840-2¼ 744 (800-2¼)	7980-3 884 (900-3)

MIRL Rwy 11-29 
REIL Rwy 11 and 29 

NW-1, 31 OCT 2024 to 28 NOV 2024

NW-1, 31 OCT 2024 to 28 NOV 2024