

LOC/DME I-JWN 110.3 Chan 40	APP CRS 198°	Rwy Idg TDZE Apt Elev	6001 501 501
-------------------------------------------------	------------------------	-----------------------------	-----------------------------------------

ILS or LOC RWY 20

JOHN C TUNE (JWN)

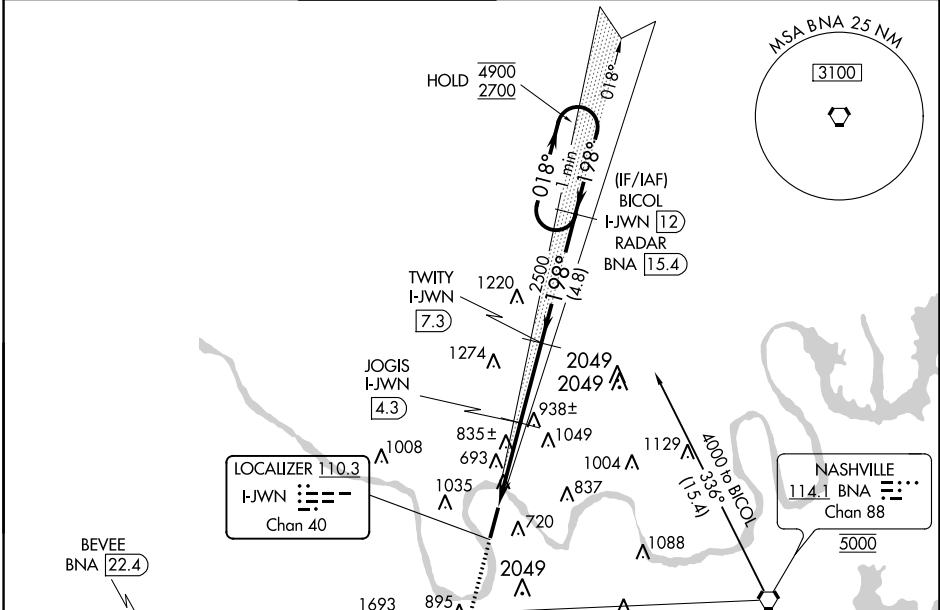
DME required.

V Circling NA east of Rwy 2-20. VDP NA when using Nashville Intl altimeter setting.

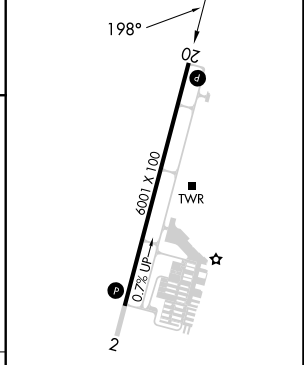
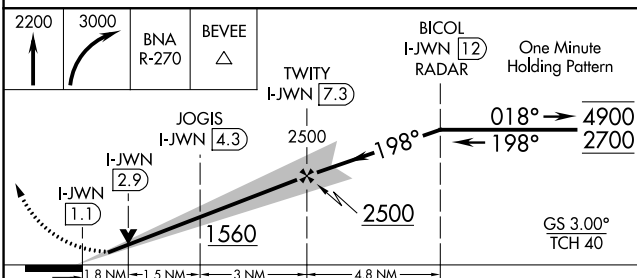
NA When local altimeter setting not received, use Nashville Intl altimeter setting and increase S-ILS 20 DA to 738 feet, increase all MDA's 40 feet.

MISSED APPROACH: Climb to 2200 then climbing right turn to 3000 on BNA VORTAC R-270 to BEVEE/BNA 22.4 DME and hold.

ATIS 127.075	NASHVILLE APP CON 119.35 372.0	JOHN TUNE TOWER ★ 119.45 (CTAF) 0	GND CON 121.7	CLNC DEL 121.7	CLNC DEL 124.55 (when twr closed)	UNICOM 122.7
------------------------	------------------------------------------	----------------------------------------------------	-------------------------	--------------------------	------------------------------------------------	------------------------



ELEV 501	D	TDZE 501
----------	----------	----------



CATEGORY	A	B	C	D
S-ILS 20	701-3/4 200 (200-3/4)			
S-LOC 20	1100-1	599 (600-1)	1100-1 3/4	599 (600-1 3/4)
C CIRCLING	1200-1	699 (700-1)	1340-2 1/2	1340-2 3/4
			839 (900-2 1/2)	839 (900-2 3/4)

MIRL Rwy 2-20 **0**
REIL Rws 2 and 20 **0**

SE-1, 22 FEB 2024 to 21 MAR 2024

SE-1, 22 FEB 2024 to 21 MAR 2024