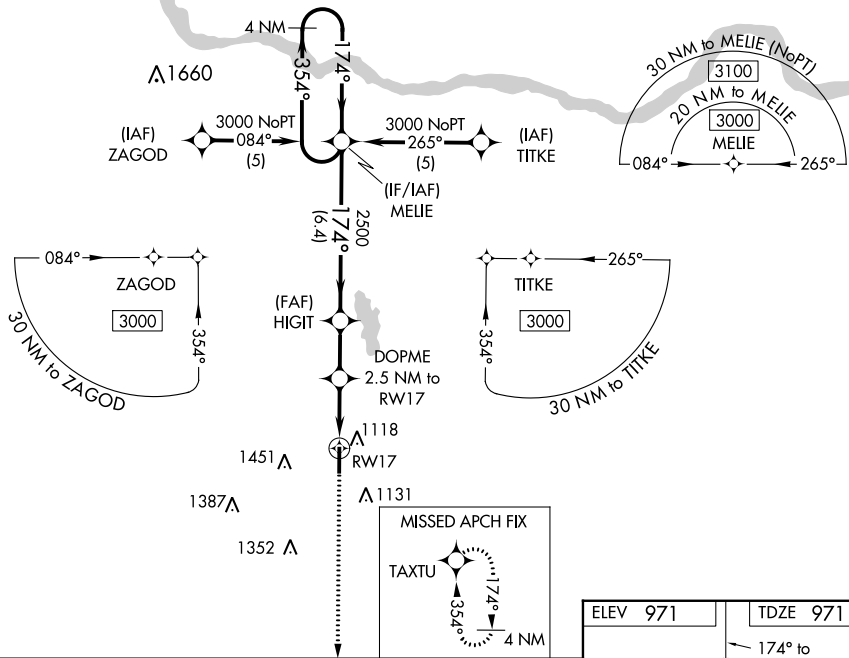


WAAS CH <b>86718</b> <b>W17A</b>	APP CRS <b>174°</b>	Rwy Idg <b>5001</b> TDZE <b>971</b> Apt Elev <b>971</b>
--	------------------------	---

# RNAV (GPS) RWY 17

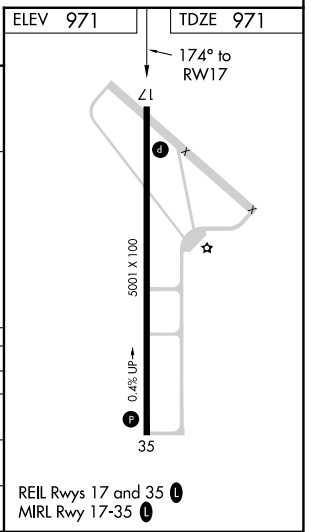
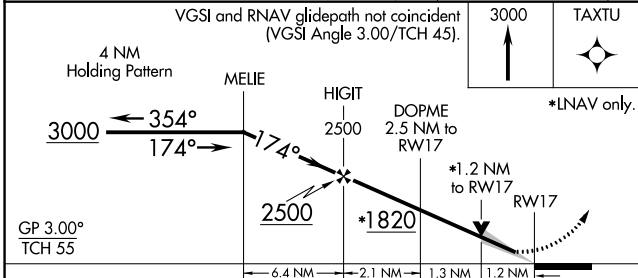
PAULS VALLEY MUNI (PVJ)

RNP APCH. When local altimeter setting not received, use Ardmore Downtown Exec altimeter setting and increase all DA 97 feet and all MDA 100 feet and LNAV/VNAV visibility ¼ SM all Cats, LNAV Cat C, D visibility ¼ SM and Circling Cat C visibility ¼ SM, and Cat D visibility ½ SM. Baro-VNAV and VDP NA when using Ardmore Downtown Exec altimeter setting. For uncompensated Baro-VNAV systems, LNAV/VNAV NA below -16°C or above 46°C.		MISSED APPROACH: Climb to 3000 direct TAXTU and hold.
AWOS-3 <b>118.675</b>	FORT WORTH CENTER <b>124.75 323.0</b>	UNICOM <b>122.8 (CTAF) 0</b>



SC-1, 31 OCT 2024 to 28 NOV 2024

SC-1, 31 OCT 2024 to 28 NOV 2024



GP 3.00° TCH 55	*LNNAV only.			
CATEGORY	A	B	C	D
LPV DA	1171-1 200 (200-1)			
LNAV/VNAV DA	1413-1½ 442 (500-1½)			
LNAV MDA	1420-1	449 (500-1)	1420-1¼ 449 (500-1¼)	1420-1¾ 449 (500-1¾)
CIRCLING	1440-1	469 (500-1)	1540-1½ 569 (600-1½)	1760-2 789 (800-2)