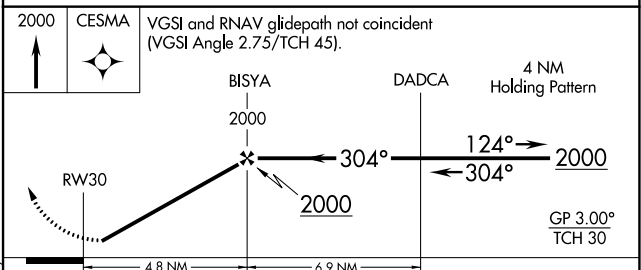
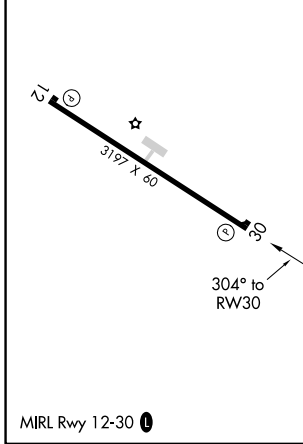
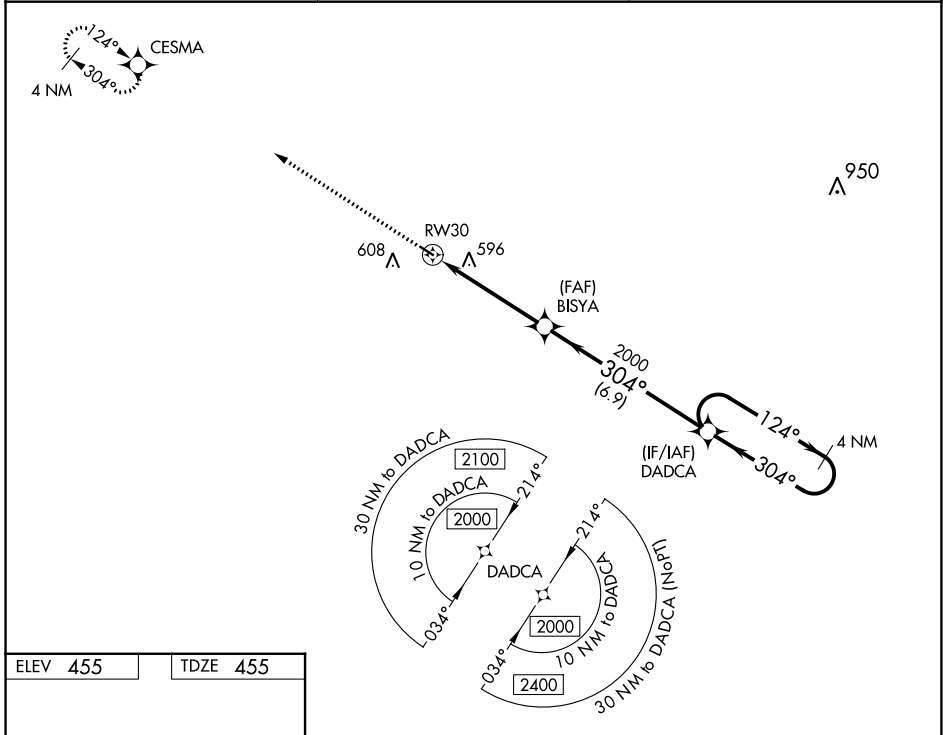


|  |                        |   |
|--|------------------------|---|
| WAAS<br>CH <b>61208</b><br><b>W30A</b> | APP CRS<br><b>304°</b> | Rwy Idg <b>3197</b><br>TDZE <b>455</b><br>Apt Elev <b>455</b> |
|--|------------------------|---|

# RNAV (GPS) RWY 30

PRENTISS-JEFFERSON DAVIS COUNTY (M43)

|   |  |  |
|---|--|--|
| <p><b>▼</b> Baro-VNAV NA, DME/DME RNP-0.3 NA. Use Brookhaven altimeter setting; when not received, use Hattiesburg/Laurel altimeter setting and increase all DA 27 feet and all MDA 40 feet. Helicopter visibility reduction below <math>\frac{3}{4}</math> SM NA.</p> <p><b>▲</b> NA</p> | <p>MISSED APPROACH:<br/>Climb to 2000 direct CESMA and hold.</p> | <p>1R7 AWOS-3P<br/><b>118.125</b></p> <p>HOUSTON CENTER<br/><b>126.8 327.8</b></p> <p>UNICOM<br/><b>122.8 (CTAF) 0</b></p> |
|---|--|--|



| CATEGORY     | A                   | B                          | C | D  |
|--------------|---------------------|----------------------------|---|----|
| LPV DA       | 770-1 $\frac{1}{8}$ | 315 (400-1 $\frac{1}{8}$ ) |   | NA |
| LNAV/VNAV DA | 797-1 $\frac{1}{4}$ | 342 (400-1 $\frac{1}{4}$ ) |   | NA |
| LNAV MDA     | 980-1               | 525 (600-1)                |   | NA |
| CIRCLING     | 1020-1              | 1080-1                     |   | NA |
|              | 565 (600-1)         | 625 (700-1)                |   |    |

SC-4, 31 OCT 2024 to 28 NOV 2024

SC-4, 31 OCT 2024 to 28 NOV 2024