

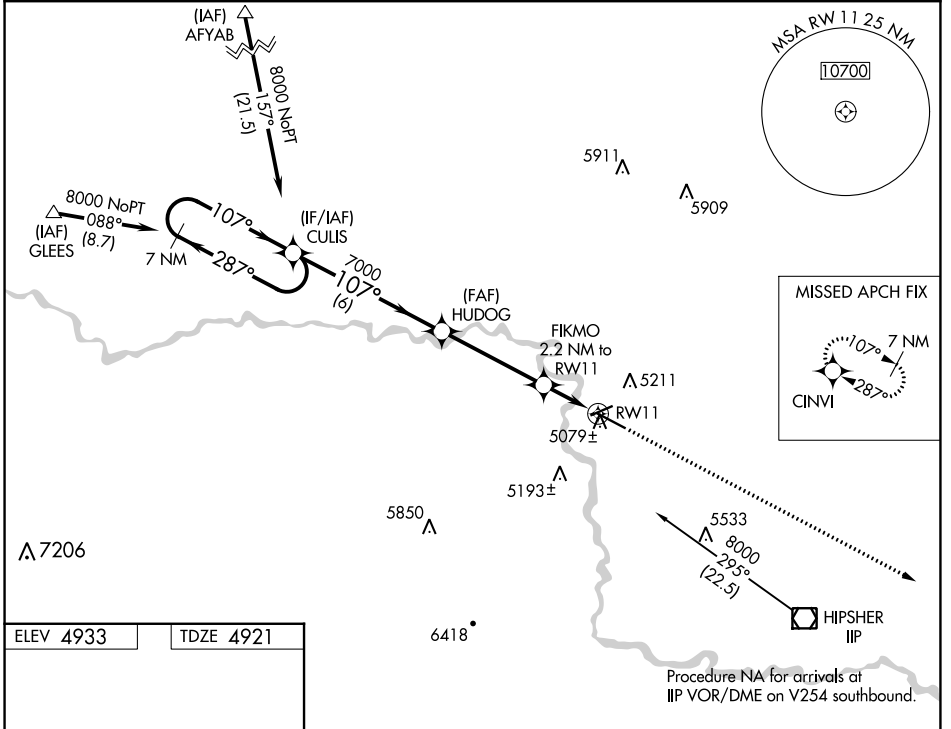
WAAS CH 58018 W11A	APP CRS 107°	Rwy Idg TDZE Apt Elev 6534 4921 4933
--	------------------------	--

RNAV (GPS) RWY 11

CONVERSE COUNTY (DGW)

RNP APCH.	MISSED APPROACH: Climb to 8000 direct CINVI and hold.
For uncompensated Baro-VNAV systems, LNAV/VNAV NA below -24°C (-11°F) or above 39°C (102°F).	

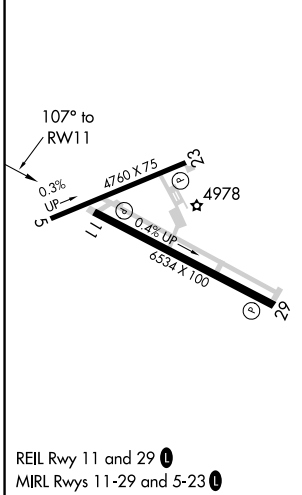
ASOS 135.225	DENVER CENTER 135.6 363.025	UNICOM 122.8 (CTAF) 0
------------------------	---------------------------------------	---------------------------------



NW-1, 03 OCT 2024 to 31 OCT 2024

NW-1, 03 OCT 2024 to 31 OCT 2024

ELEV 4933	TDZE 4921
-----------	-----------



	7 NM Holding Pattern	CULIS	HUDOG	FIKMO 2.2 NM to RWY 11	RWY 11
	8000	7000	7000	*5640	8000
	GP 3.00°				
	TCH 40				
	6 NM	4.1 NM	0.9 NM	1.3 NM	1.3 NM
CATEGORY	A	B	C	D	
LPV DA		5121-3/4	200 (200-3/4)		
LNAV/VNAV DA		5329-1 1/2	408 (400-1 1/2)		
LNAV MDA		5340-1	419 (500-1)	5340-1 1/4	419 (500-1 1/4)