

APP CRS 234°	Rwy Idg 3058
	TDZE 892
	Apt Elev 892

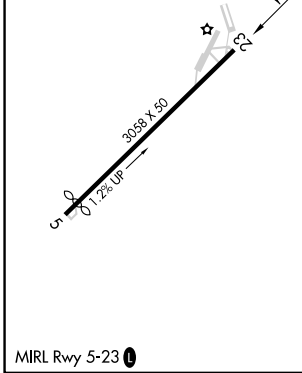
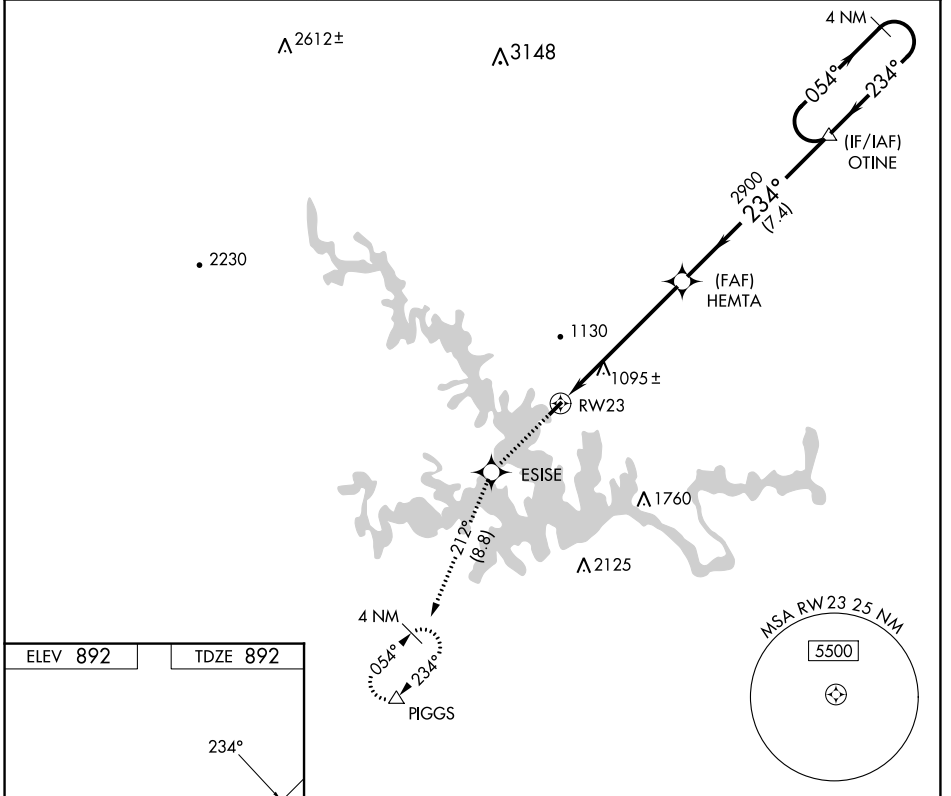
RNAV (GPS) RWY 23

SMITH MOUNTAIN LAKE (W91)

NA DME/DME RNP-0.3 NA. Use Lynchburg altimeter setting; when not received, use Roanoke altimeter setting and increase all MDA 40 feet. Procedure NA at night. Helicopter visibility reduction below 1 SM NA.

MISSED APPROACH: Climb to 4000 direct ESISE and on track 212° to PIGGS and hold.

LYH ASOS 119.8	ROANOKE APP CON 135.0 254.325	UNICOM 122.975 (CTAF)
--------------------------	---	---------------------------------



ELEV 892	TDZE 892				
4000	ESISE	tr 212°	PIGGS	Visual Segment - Obstacles. 4 NM Holding Pattern	
RWY 23		HEMTA		OTINE	
6.2 NM		7.4 NM		3000	
CATEGORY	A	B	C	D	
LNAV MDA	1900-3	1008 (1100-3)	NA		
CIRCLING	1900-3	1008 (1100-3)	NA		

NE-3, 31 OCT 2024 to 28 NOV 2024

NE-3, 31 OCT 2024 to 28 NOV 2024