

WAAS CH 40036 W21A	APP CRS 211°	Rwy Idg TDZE Apt Elev	4002 899 899
----------------------------------------	------------------------	-----------------------------	-----------------------------------------

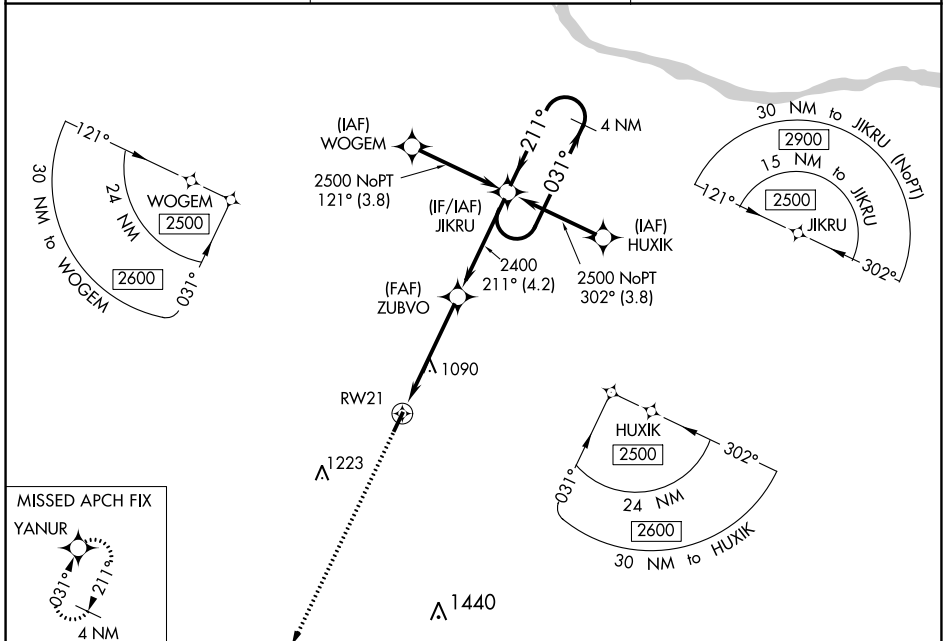
RNAV (GPS) RWY 21

GENE SNYDER (K62)

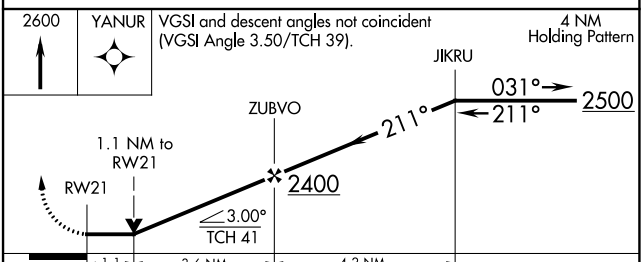
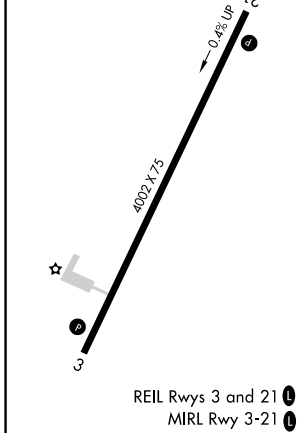
⚠ **NA** DME/DME RNP-0.3 NA. When local altimeter setting not received, use Cincinnati/Northern Kentucky Intl altimeter setting and increase all MDA 60 feet. Night landing: Rwy 03 NA. Helicopter visibility reduction below ¼ SM NA. VDP NA when using Cincinnati/Northern Kentucky Intl altimeter setting.

MISSED APPROACH: Climb to 2600 direct YANUR and hold.

AWOS-3 123.825	CINCINNATI APP CON 121.0 254.25	UNICOM 122.7 (CTAF) 0
--------------------------	-------------------------------------------	---------------------------------



ELEV 899	TDZE 899
-----------------	-----------------



CATEGORY	A	B	C	D
LP MDA	1340-1	441 (500-1)		NA
LNAV MDA	1360-1	461 (500-1)		NA
C CIRCLING	1400-1	501 (600-1)		NA

SE-1, 31 OCT 2024 to 28 NOV 2024

SE-1, 31 OCT 2024 to 28 NOV 2024