

|  |                        |   |
|--|------------------------|---|
| WAAS<br>CH <b>56339</b><br><b>W04A</b> | APP CRS<br><b>035°</b> | Rwy Idg <b>7398</b><br>TDZE <b>5837</b><br>Apt Elev <b>5837</b> |
|--|------------------------|---|

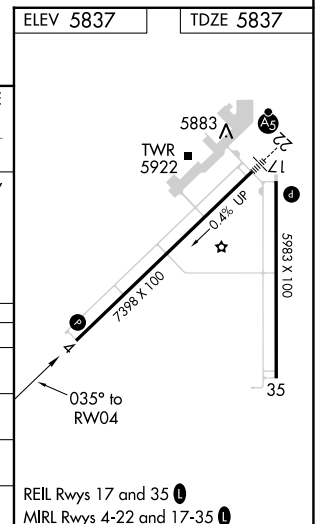
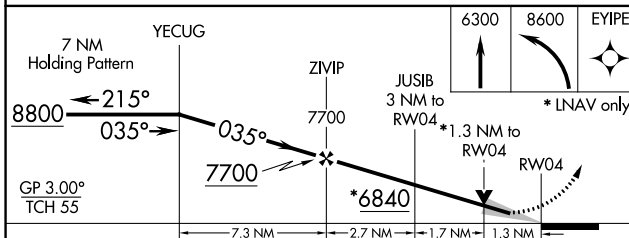
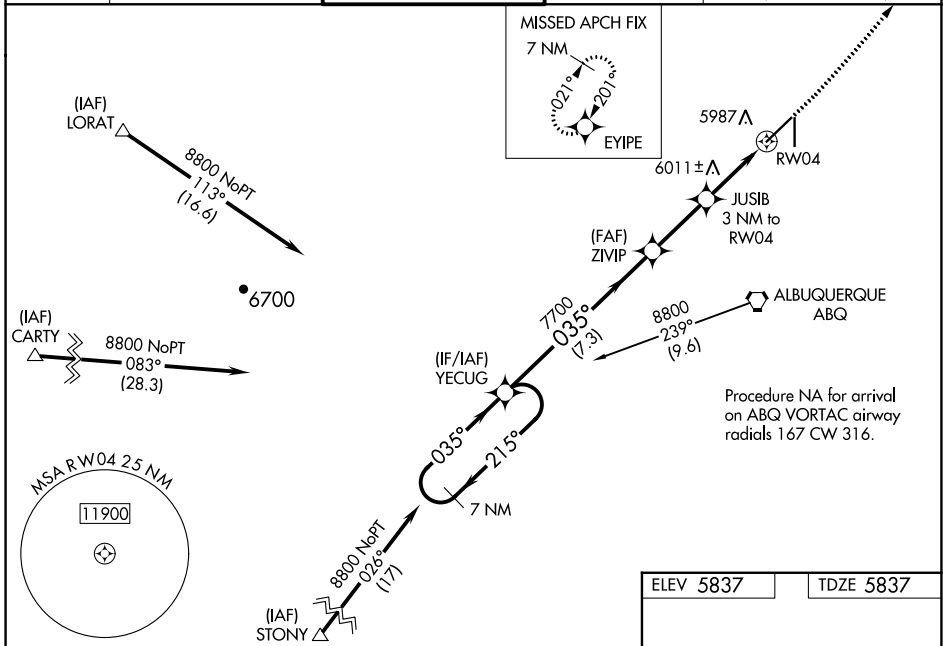
# RNAV (GPS) RWY 4

## DOUBLE EAGLE II (A/E/G)

**⚠** DME/DME RNP-0.3 NA. When local altimeter setting not received, use Albuquerque Intl Support altimeter setting and increase LPV DA to 6131 feet and LNAV/VNAV DA to 6384 feet, increase all MDA 100 feet, and increase LPV all Cats visibility 1/8 mile, LNAV/VNAV all Cats visibility 3/8 mile, LNAV visibility Cat C/D 1/4 mile, and Circling visibility Cats C/D 1/2 mile. Baro-VNAV and VDP NA when using Albuquerque Intl Support altimeter setting. For uncompensated Baro-VNAV systems, LNAV/VNAV NA below -26°C (-14°F) or above 46°C (114°F).

**MISSED APPROACH:** Climb to 6300 then climbing left turn to 8600 direct EYIPE and hold.

|                        |   |  |                           |   |
|------------------------|---|--|---------------------------|---|
| ATIS<br><b>119.025</b> | ALBUQUERQUE APP CON<br><b>127.4 253.5</b> | <b>DOUBLE EAGLE II TOWER ★</b><br><b>120.15 (CTAF) 0</b> | GND CON<br><b>121.625</b> | CLNC DEL<br><b>124.8</b><br>(When twr closed) |
|------------------------|---|--|---------------------------|---|



| CATEGORY          | A      | B           | C                             | D                             |
|-------------------|--------|-------------|-------------------------------|-------------------------------|
| LPV DA            |        | 6037-3/4    | 200 (200-3/4)                 |                               |
| LNAV/VNAV DA      |        | 6290-1 1/2  | 453 (500-1 1/2)               |                               |
| LNAV MDA          | 6300-1 | 463 (500-1) | 6300-1 3/8                    | 463 (500-1 3/8)               |
| <b>C</b> CIRCLING | 6400-1 | 563 (600-1) | 6420-1 1/2<br>583 (600-1 1/2) | 6640-2 1/2<br>803 (900-2 1/2) |

SW-1, 31 OCT 2024 to 28 NOV 2024

SW-1, 31 OCT 2024 to 28 NOV 2024