

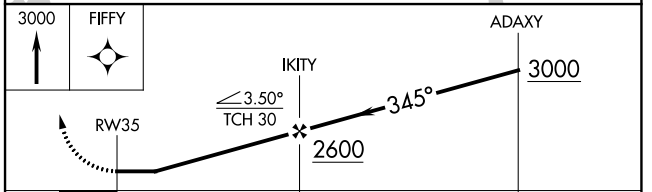
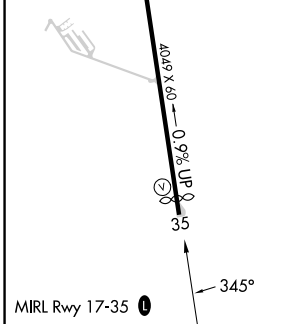
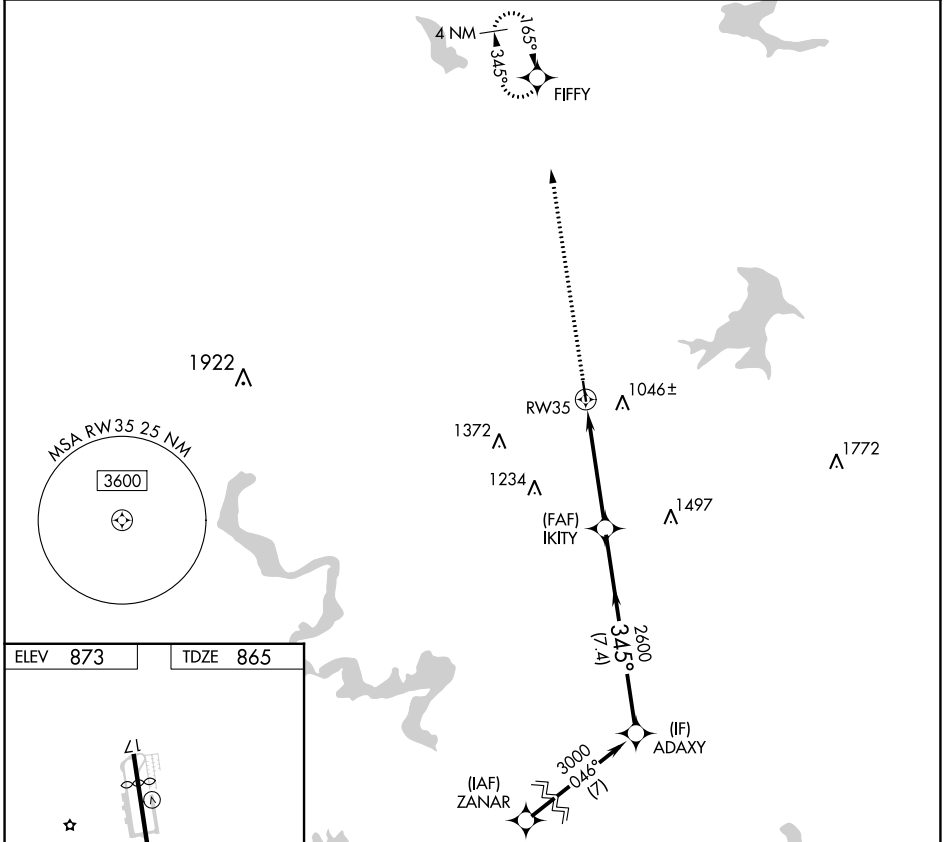
APP CRS	Rwy Idg	<b>3834</b>
<b>345°</b>	TDZE	<b>865</b>
	Apt Elev	<b>873</b>

# RNAV (GPS) RWY 35

BOURLAND FLD (50F)

RNP APCH - GPS.	MISSED APPROACH: Climb to 3000 direct FIFFY and hold.
<p>▼ Procedure NA at night. Rwy 35 helicopter visibility reduction below 1 SM NA. Circling NA to Rwy 17.</p> <p>▲ NA</p>	

CPT AWOS-3 <b>119.525</b>	LONE STAR APP CON <b>135.975 379.9</b>	UNICOM <b>123.0 (CTAF)</b>
------------------------------	---	-------------------------------



CATEGORY	A	B	C	D
LNAV MDA	1560-1	695 (700-1)	1560-2 695 (700-2)	NA
CIRCLING	1580-1	707 (800-1)	1680-2¼ 807 (900-2¼)	NA