

RNAV (GPS) RWY 17

BOURLAND FLD (50F)

APP CRS	Rwy Idg	3657
165°	TDZE	870
	Apt Elev	873

RNP APCH - GPS.

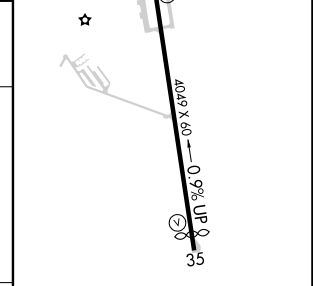
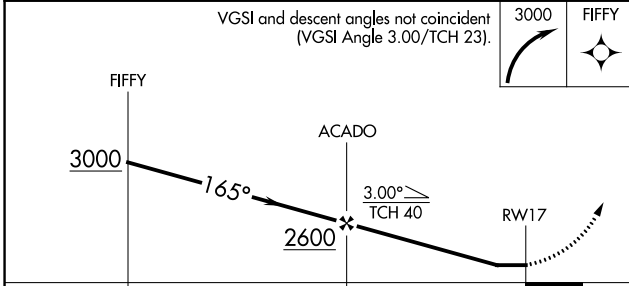
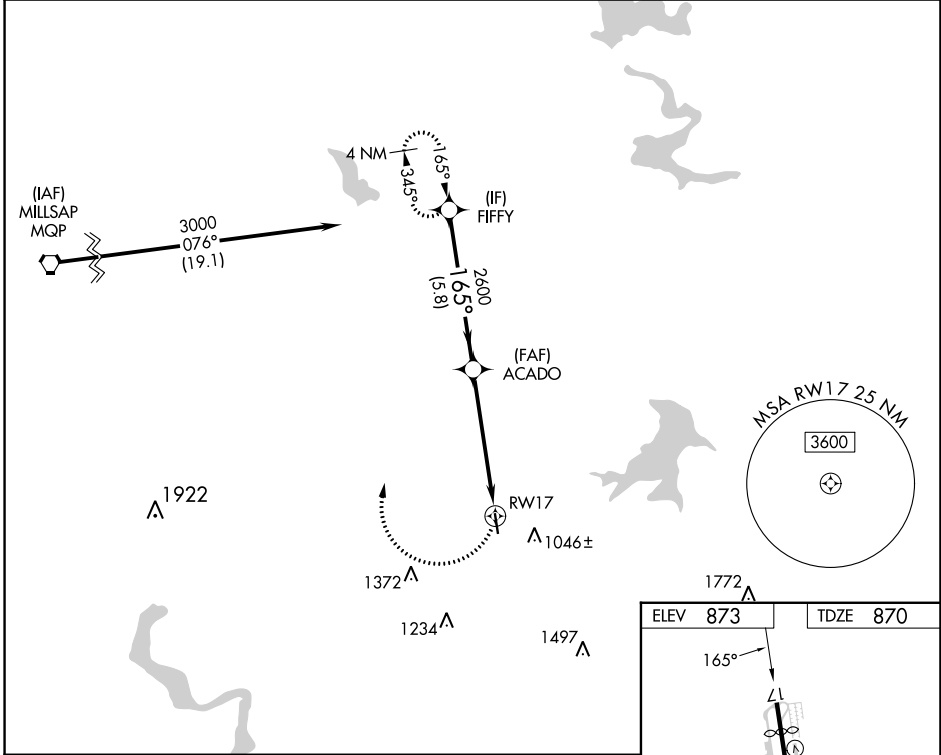
Procedure NA at night. Rwy 17 helicopter visibility reduction below 1 SM NA.

MISSED APPROACH: Climbing right turn to 3000 direct FIFFY and hold.

CPT AWOS-3
119,525

LONE STAR APP CON
135,975 379.9

UNICOM
123.0 (CTAF) 0



CATEGORY	A	B	C	D
LNAV MDA	1520-1	650 (700-1)	1520-1 ⁷ / ₈ 650 (700-1 ⁷ / ₈)	NA

MIRL Rwy 17-35 0

SC-2, 31 OCT 2024 to 28 NOV 2024

SC-2, 31 OCT 2024 to 28 NOV 2024