

WAAS CH <b>42933</b> <b>W20A</b>	APP CRS <b>198°</b>	Rwy Idg <b>4150</b> TDZE <b>874</b> Apt Elev <b>878</b>
----------------------------------------	------------------------	---------------------------------------------------------------

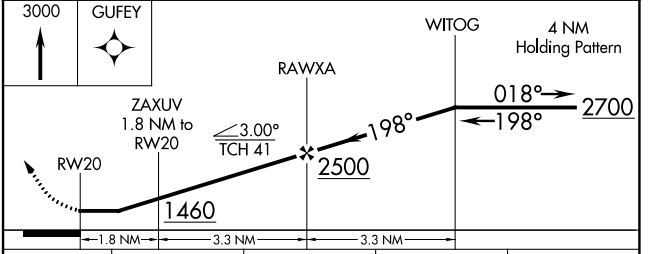
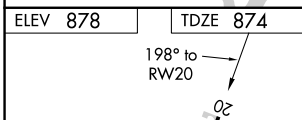
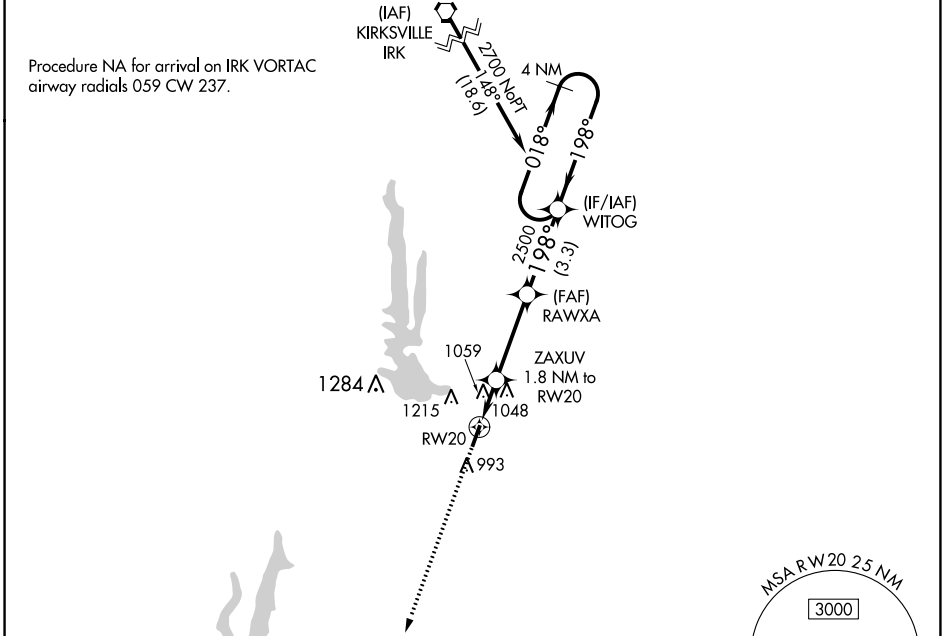
# RNAV (GPS) RWY 20

MACON-FOWER MEML (K89)

**NA** DME/DME RNP-0.3 NA. Use Moberly altimeter setting; when not received, use Columbia altimeter setting and increase all MDA 100 feet. Helicopter visibility reduction below 1 SM NA. Night landing: Rwy 20 NA.

MISSED APPROACH: Climb to 3000 direct GUFY and hold.

MBY AWOS-3PT <b>120.025</b>	KANSAS CITY CENTER <b>125.25 235.975</b>	UNICOM <b>122.8 (CTAF)</b>
--------------------------------	---------------------------------------------	-------------------------------



CATEGORY	A	B	C	D
LP MDA	1340-1	466 (500-1)	NA	
LNAV MDA	1360-1	486 (500-1)	NA	
<b>C</b> CIRCLING	1400-1 522 (600-1)	1560-1 682 (700-1)	NA	

NC-3, 03 OCT 2024 to 31 OCT 2024

NC-3, 03 OCT 2024 to 31 OCT 2024