

WAAS CH <b>49113</b> <b>W35A</b>	APP CRS <b>349°</b>	Rwy ldg <b>5498</b> TDZE <b>1670</b> Apt Elev <b>1670</b>
--	------------------------	---

# RNAV (GPS) RWY 35

YORK MUNI (JYR)

RNP APCH.

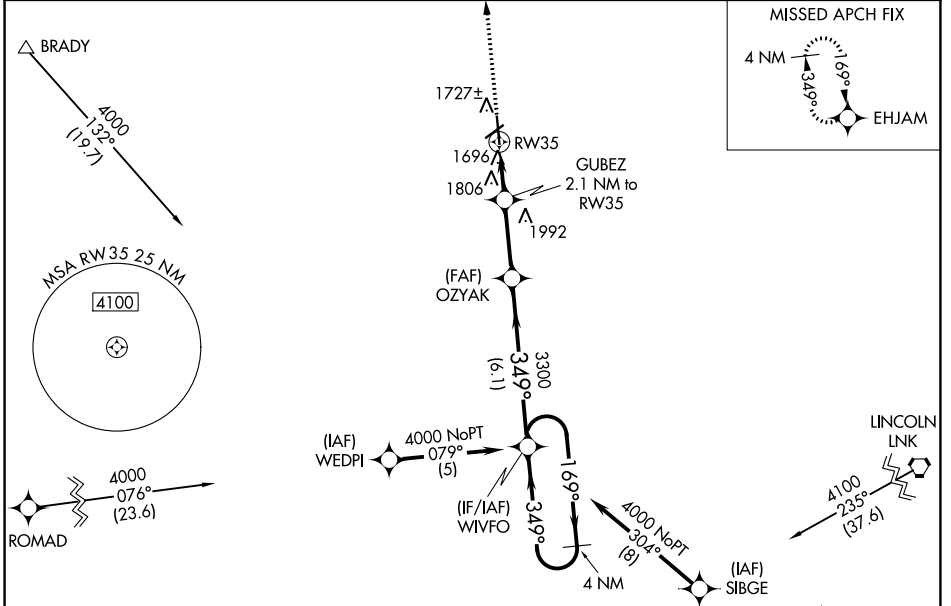
**⚠** For uncompensated Baro-VNAV systems, LNAV/VNAV NA below -18°C or above 54°C.  
**⚠** When local altimeter setting not received, use Aurora altimeter setting and increase all DA/MDA 60 feet and all LPV, all LNAV/VNAV, and Cat C LNAV visibility ¼ mile.  
 VDP and Baro-VNAV NA when using Aurora altimeter setting.

MISSED APPROACH:  
 Climb to 4000 direct  
 EHJAM and hold.

AWOS-3  
**124.175**

MINNEAPOLIS CENTER  
**119.4 278.8**

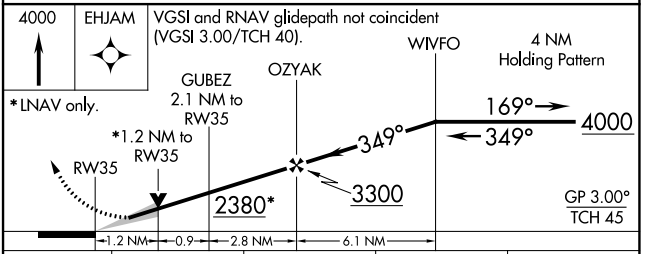
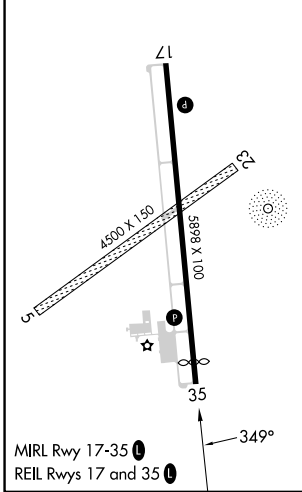
UNICOM  
**122.8 (CTAF)**



NC-2, 31 OCT 2024 to 28 NOV 2024

NC-2, 31 OCT 2024 to 28 NOV 2024

ELEV 1670 **D** TDZE 1670



CATEGORY	A	B	C	D
LPV DA	1920-3/4	250 (300-3/4)		NA
LNAV/VNAV DA	2004-1 1/4	334 (400-1 1/4)		NA
LNAV MDA	2060-1	390 (400-1)		NA
CIRCLING	2060-1 390 (400-1)	2180-1 510 (600-1)	2200-1 1/2 530 (600-1 1/2)	NA