

WAAS CH 86301 W17A	APP CRS 169°	Rwy Idg 5898 TDZE 1665 Apt Elev 1670
----------------------------------------	------------------------	-----------------------------------------------------------------

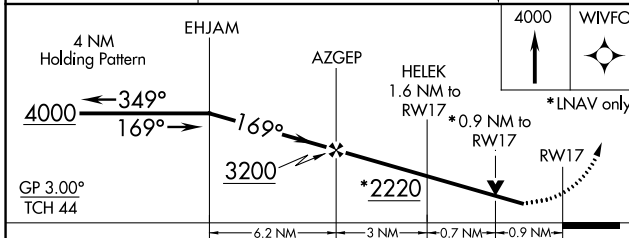
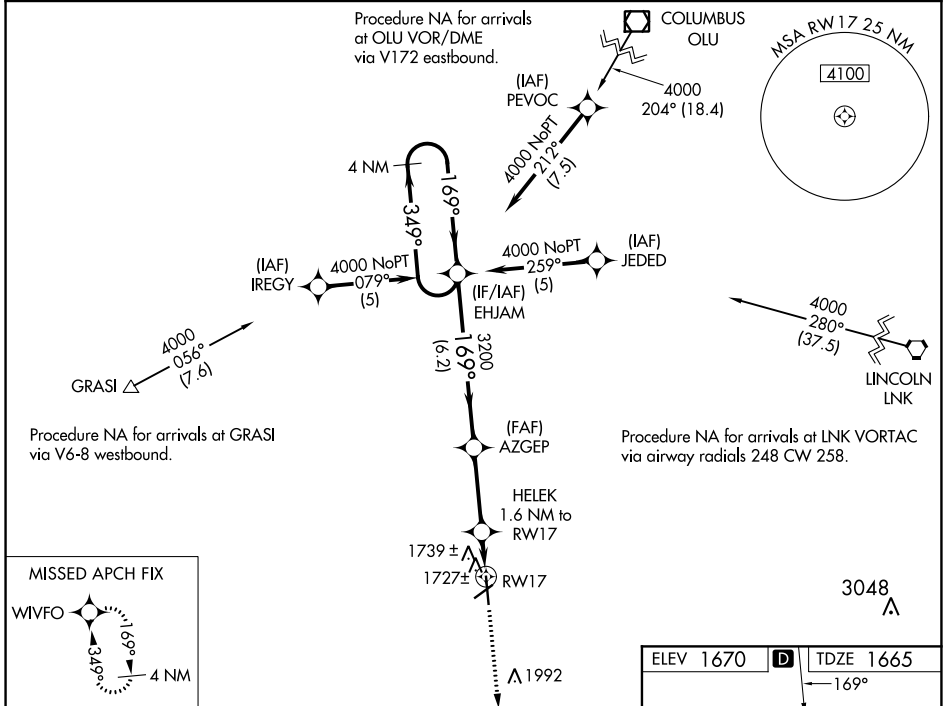
RNAV (GPS) RWY 17

YORK MUNI (JYR)

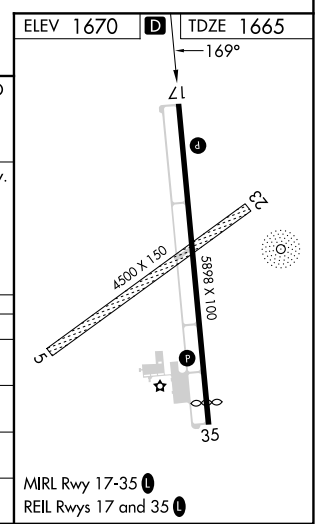
⚠ For uncompensated Baro-VNAV systems, LNAV/VNAV NA below -18°C (0°F) or above 54°C (130°F). DME/DME RNP-0.3 NA. Visibility reduction by helicopters NA. When local altimeter setting not received, use Aurora altimeter setting and increase all DA/MDA 60 feet and all LPV and LNAV/VNAV visibility ¼ mile. VDP and Baro-VNAV NA when using Aurora altimeter setting.

MISSED APPROACH: Climb to 4000 direct WIVFO and hold.

AWOS-3 124.175	MINNEAPOLIS CENTER 119.4 278.8	UNICOM 122.8 (CTAF) Ⓛ
--------------------------	------------------------------------------	---------------------------------



CATEGORY	A	B	C	D
LPV DA	1915-3/4	250 (300-3/4)		NA
LNAV/VNAV DA	2031-1 1/4	366 (400-1 1/4)		NA
LNAV MDA	2000-1	335 (400-1)		NA
CIRCLING	2060-1 390 (400-1)	2180-1 510 (600-1)	2200-1 1/2 530 (600-1 1/2)	NA



NC-2, 31 OCT 2024 to 28 NOV 2024

NC-2, 31 OCT 2024 to 28 NOV 2024