

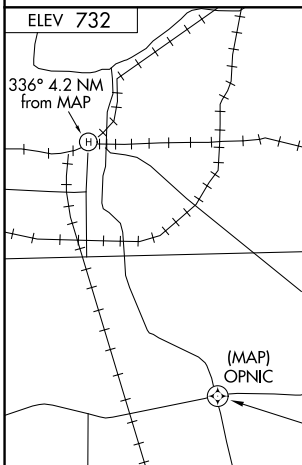
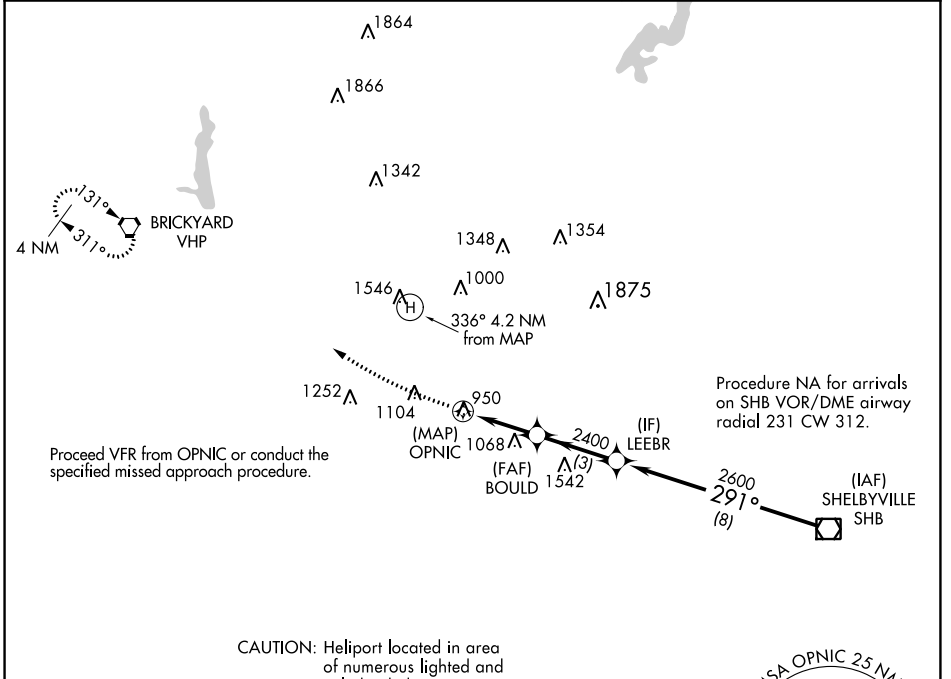
APP CRS 291°	Rwy Idg Surf Elev Apt Elev	N/A 824 732
------------------------	----------------------------------	--

COPTER RNAV (GPS) 291°

INDIANAPOLIS DOWNTOWN (8A.4)

RNP APCH - GPS	<p>NA Limit final and missed approach to 70 KIAS. When local altimeter setting not received, use Indianapolis Intl altimeter setting and increase MDA 40 feet. Activate High Intensity Pad Lights-CTAF.</p>	<p>MISSED APPROACH: Climb to 1500 then climbing right turn to 3000 direct VHP VORTAC and hold.</p>
----------------	--	--

AWOS-3 135.525	INDIANAPOLIS APP CON 125.275 317.8	UNICOM 123.05 (CTAF) 0
--------------------------	--	----------------------------------



1500	3000	VHP	LEEBR	SHB VOR/DME
↑	↷			
Proceed VFR from MAP		OPNIC	BOULD	LEEBR
		2400	291°	291°
		2600	2600	2600
		2.8 NM	3 NM	8 NM
CATEGORY	COPTER			
LNAV MDA	1340-3/4 516 (600-3/4)			

EC-2, 03 OCT 2024 to 31 OCT 2024

EC-2, 03 OCT 2024 to 31 OCT 2024