

# SWABR ONE DEPARTURE (RNAV)

CTAF  
122.9  
REGIONAL DEP CON  
125.2 343.65

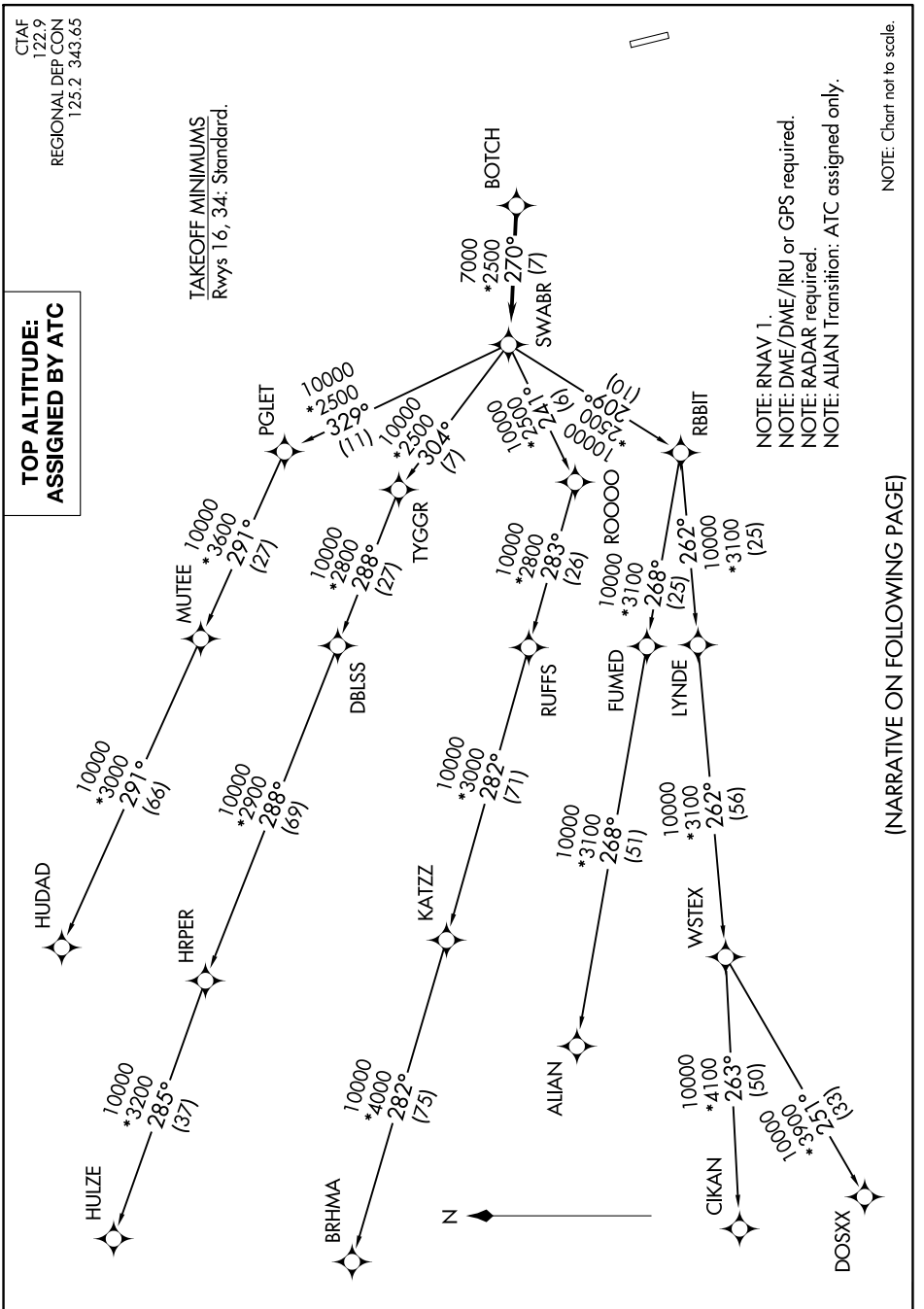
**TOP ALTITUDE:  
ASSIGNED BY ATC**

TAKEOFF MINIMUMS  
Rwys 16, 34: Standard.

NOTE: RNAV 1.  
NOTE: DME/DME/IRU or GPS required.  
NOTE: RADAR required.  
NOTE: ALIAN Transition: ATC assigned only.

NOTE: Chart not to scale.

SC-2, 03 OCT 2024 to 31 OCT 2024



(NARRATIVE ON FOLLOWING PAGE)

SC-2, 03 OCT 2024 to 31 OCT 2024

# SWABR ONE DEPARTURE (RNAV)