

KINGDOM FOUR DEPARTURE

(CONTINUED ON FOLLOWING PAGE)

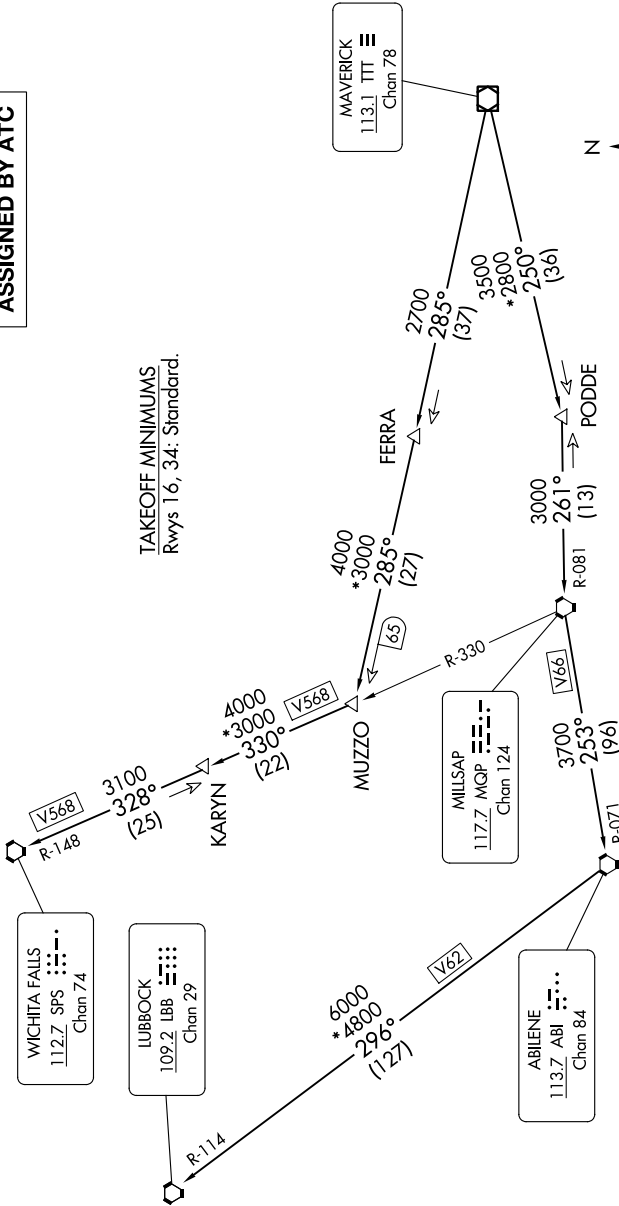
SC-2, 03 OCT 2024 to 31 OCT 2024

RADAR and DME required.

**TOP ALTITUDE:
ASSIGNED BY ATC**

REGIONAL DEP CON
125.2 343.65
CTAF
122.9

TAKEOFF MINIMUMS
Rwys 16, 34: Standard.



- NOTE: LUBBOCK Transition: For all aircraft overlying the MQP VORTAC westbound or direct.
- NOTE: MILLSAP Transition: For all aircraft overlying the MQP VORTAC westbound or direct.
- NOTE: PODDE Transition: ATC assigned.
- NOTE: WICHITA FALLS Transition: For all aircraft landing within the Wichita Falls terminal area or overlying the SPS VORTAC.
- NOTE: For all aircraft requesting 17000 and below.

NOTE: Chart not to scale.

SC-2, 03 OCT 2024 to 31 OCT 2024

KINGDOM FOUR DEPARTURE