

WAAS CH 99503 W27A	APP CRS 270°	Rwy Idg TDZE Apt Elev	6500 17 17
--	------------------------	-----------------------------	---------------------------------------

RNAV (GPS) RWY 27

GULF SHORES INTL/JACK EDWARDS FLD (JKA)

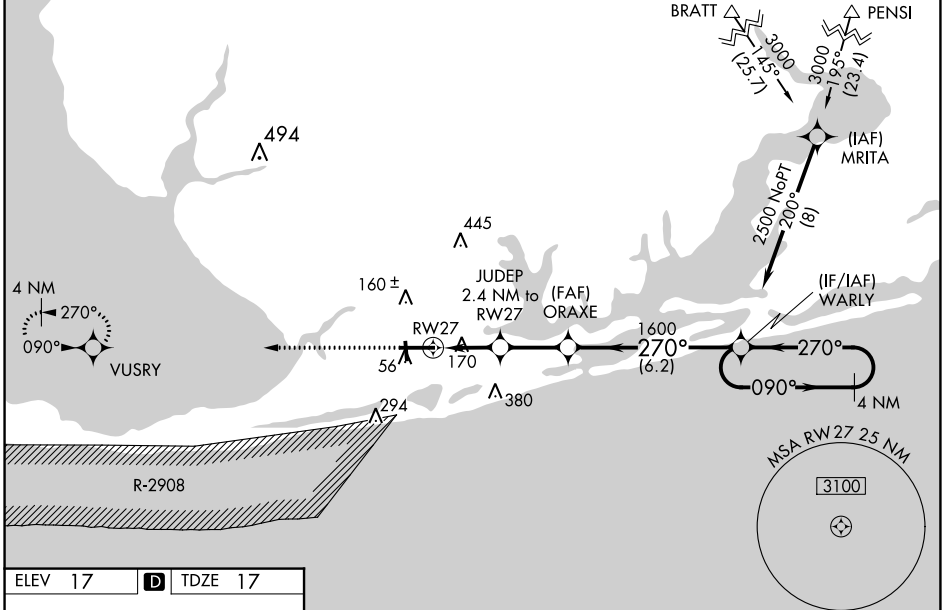
For uncompensated Baro-VNAV systems, LNAV/VNAV NA below -15°C (5°F) or above 54°C (130°F). Baro-VNAV and VDP NA when using Pensacola Intl altimeter setting. Circling Rwy 17, 35 NA at night. DME/DME RNP-0.3 NA. When local altimeter setting not received, use Pensacola Intl altimeter setting and increase LPV DA to 295 feet; increase LNAV/VNAV DA to 559 feet and all visibilities ¼ SM; increase all MDAs 80 feet and visibility Cats C and D ¼ SM. For inop ALS, increase LNAV Cat C/D visibility to 1½ SM. For inop ALS, when using Pensacola Intl altimeter setting minimums, increase LPV all Cats visibility to ¾ SM, increase LNAV Cats C/D visibility to 1¾ SM.

MALSR

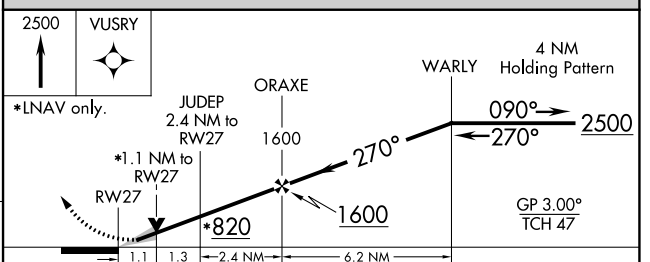
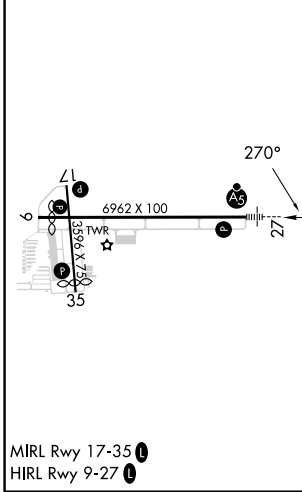


MISSED APPROACH:
Climb to 2500 direct
VUSRY and hold.

ATIS 134.525	PENSACOLA APP CON 120.65 270.8	GULF SHORES TOWER ★ 118.65 (CTAF)	CLNC DEL 121.7	CLNC DEL 124.55 (When twr dcd)	GND CON 121.7	UNICOM 122.7
------------------------	--	---	--------------------------	--	-------------------------	------------------------



ELEV 17	D TDZE 17
---------	------------------



CATEGORY	A	B	C	D
LPV DA		217-½	200 (200-½)	
LNAV/VNAV DA		481-1½	464 (500-1½)	
LNAV MDA	420-½	403 (500-½)	420-¾	403 (500-¾)
C CIRCLING	480-1	463 (500-1)	740-2 723 (800-2)	740-2¼ 723 (800-2¼)

SE-4, 11 JUL 2024 to 08 AUG 2024

SE-4, 11 JUL 2024 to 08 AUG 2024