

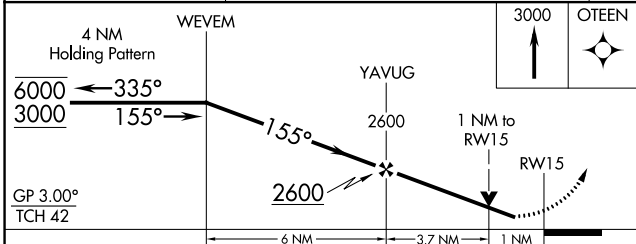
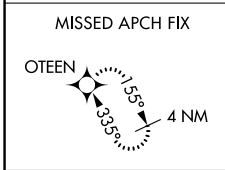
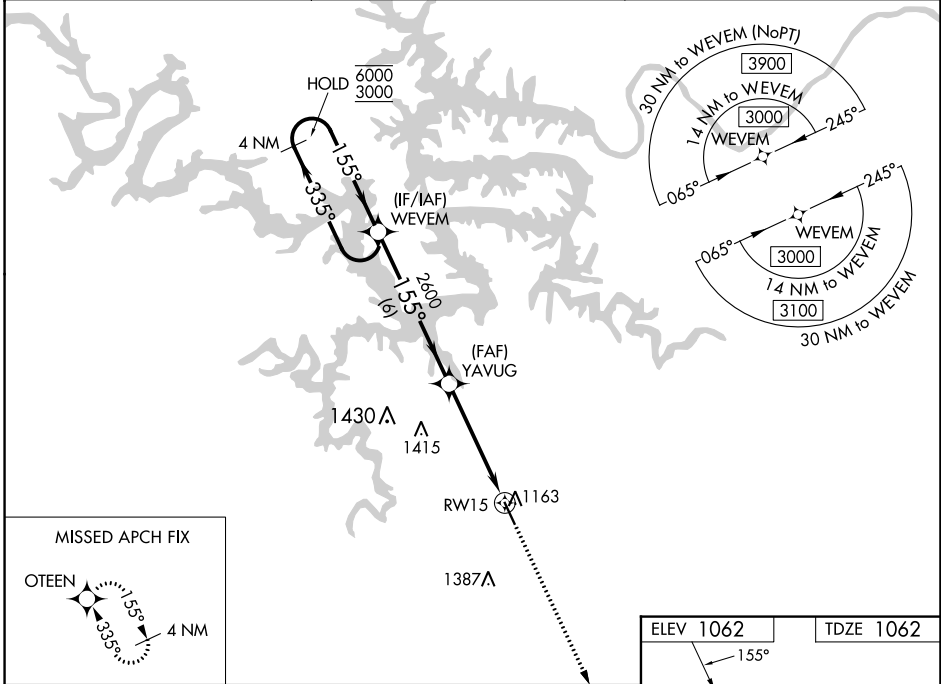
WAAS CH 50219 W15A	APP CRS 155°	Rwy Idg 5002 TDZE 1062 Apt Elev 1062
--	------------------------	---

RNAV (GPS) RWY 15

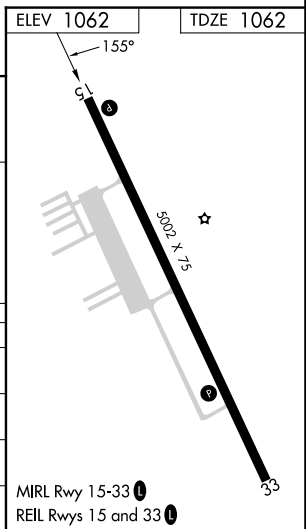
CAMDENTON MEML-LAKE RGNL (OZS)

RNP APCH - GPS.	MISSED APPROACH: Climb to 3000 direct OTEEN and hold.
<p>▼ Rwy 15 helicopter visibility reduction below 3/4 SM NA. ▲ For uncompensated Baro-VNAV systems, LNAV/VNAV NA below -17°C or above 54°C.</p>	

AWOS-3PT 120.225	MIZZU APP CON 124.1 353.925	UNICOM 122.8 (CTAF) 0
----------------------------	---------------------------------------	---------------------------------



CATEGORY	A	B	C	D
LPV DA	1312-1	250 (300-1)		NA
LNAV/VNAV DA	1313-1	251 (300-1)		NA
LNAV MDA	1420-1	358 (400-1)		NA
C CIRCLING	1520-1	458 (500-1)	1700-1 3/4 638 (700-1 3/4)	NA



NC-3, 26 JAN 2023 to 23 FEB 2023

NC-3, 26 JAN 2023 to 23 FEB 2023