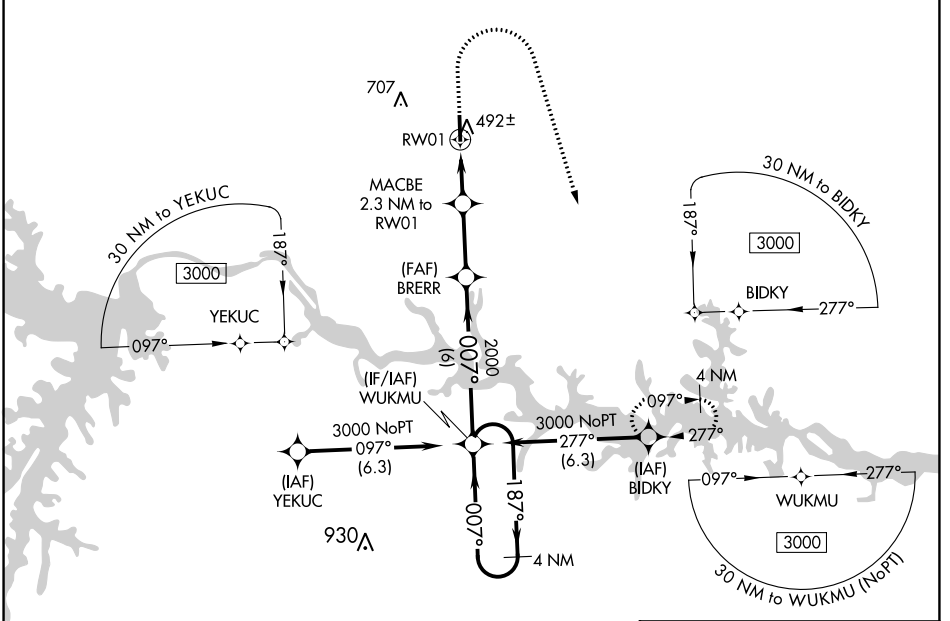


WAAS CH 63118 W01A	APP CRS 007°	Rwy Idg TDZE 417 Apt Elev 441	5002
--	------------------------	---	-------------

RNAV (GPS) RWY 1

MECKLENBURG-BRUNSWICK RGNL (AVC)

For uncompensated Baro-VNAV systems, LNAV/VNAV NA below -15°C (5°F) or above 54°C (130°F). DME/DME RNP-0.3 NA. Rwy 1 helicopter visibility reduction below 3/4 SM NA. For inop ALS, increase LPV all visibility to 1 1/2 SM.	ODALS 	MISSED APPROACH: Climb to 900 then climbing right turn to 3000 direct BIDKY and hold.
	AWOS-3 127.525	WASHINGTON CENTER 118.75 377.1



NE-3, 31 OCT 2024 to 28 NOV 2024

NE-3, 31 OCT 2024 to 28 NOV 2024

4 NM Holding Pattern VGSI and RNAV glidepath not coincident (VGSI Angle 3.00/TCH 40). WUKMU		900 3000 BIDKY			
GP 3.00° TCH 51 3000 ← 187° → 007° → 007° → 2000 → 1160 → 1.1 NM to RWY 01 → RWY 01		* LNAV only.			
6 NM → 2.6 NM → 1.2 NM → 1.1 NM					
CATEGORY	A	B	C	D	
LPV DA		714-1	297 (300-1)		
LNAV/VNAV DA		692-1	275 (300-1)		
LNAV MDA		760-1	343 (400-1)		
CIRCLING	860-1	900-1	1060-1 3/4	1060-2	MRL Rwy 1-19 REL Rws 1 and 19
	419 (500-1)	459 (500-1)	619 (700-1 3/4)	619 (700-2)	