

LOC/DME I-JUH	APP CRS	Rwy Idg	5002
109.35	276°	TDZE	3142
Chan 30(Y)		Apt Elev	3178

LOC RWY 28

ASHE COUNTY (GEV)

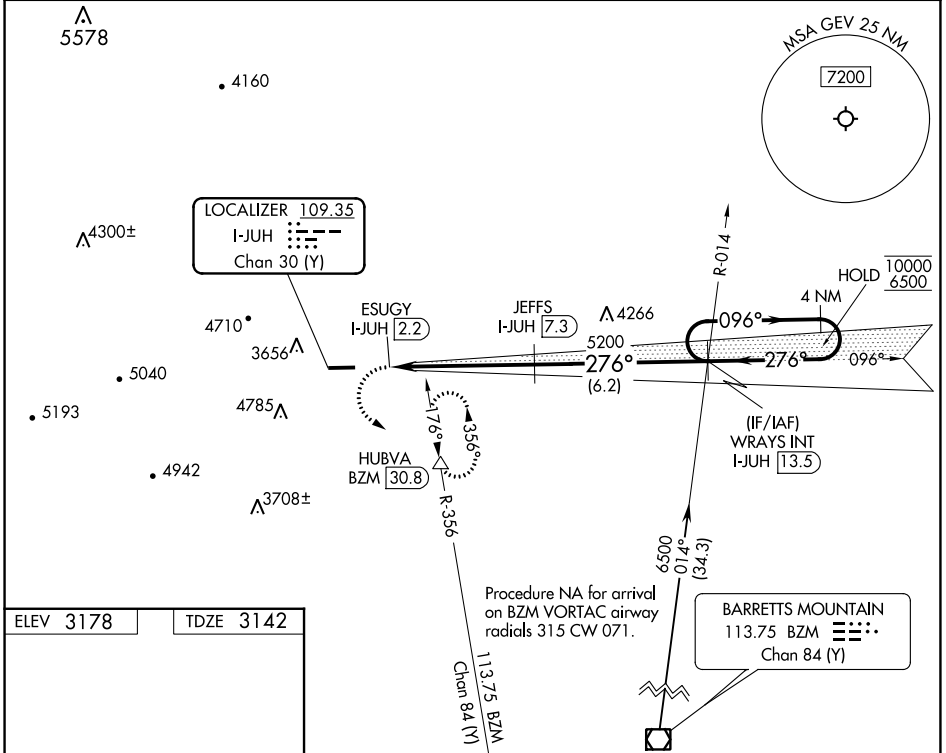
DME required.

∇ Circling to Rwy 10 NA at night.

▲

MISSED APPROACH: Climbing left turn to 7200 on heading 096° and on BZM VOR/DME R-356 to HUBVA/BZM 30.8 DME and hold, continue climb-in-hold to 7200.

AWOS-3 120.675	ATLANTA CENTER 125.15 263.0	UNICOM 122.8 (CTAF) 0
--------------------------	---------------------------------------	---------------------------------



ELEV 3178 TDZE 3142

REIL Rwy 28 0

MIRL Rwy 10-28 0

5002 X 75

10 28

1.8% UP

276°

7200	BZM R-356	HUBVA	4 NM Holding Pattern	
hdg 096°			WRAYS INT I-JUH [13.5]	
ESUGY I-JUH [2.2]	JEFFS I-JUH [7.3]	5200	10000	6500
1.3	1.3 NM	3.9 NM	6.2 NM	
∠ 3.00°	TCH 48			
CATEGORY	A	B	C	D
S-LOC 28	3980-1½	838 (900-1½)	3980-2½	838 (900-2½)
C CIRCLING	4280-1½	1102 (1200-1½)	5140-3 1962 (2000-3)	5180-3 2002 (2100-3)

SE-2, 08 AUG 2024 to 05 SEP 2024

SE-2, 08 AUG 2024 to 05 SEP 2024