

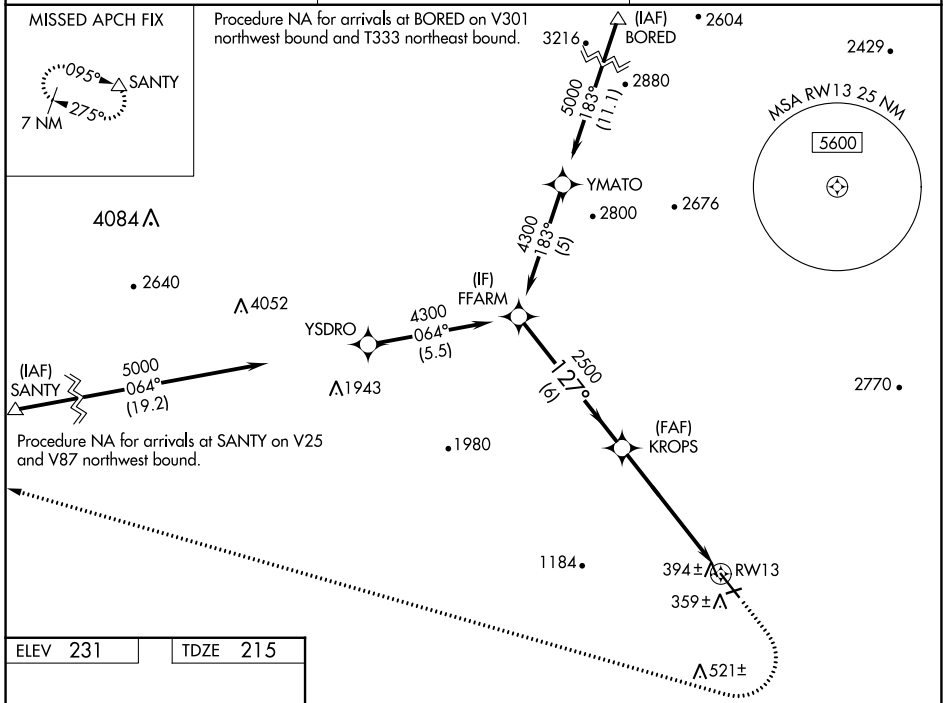
WAAS CH 70746 W13A	APP CRS 127°	Rwy Idg TDZE Apt Elev	6350 215 231
----------------------------------------	------------------------	-----------------------------	-----------------------------------------

RNAV (GPS) RWY 13

HOLLISTER MUNI (CVH)

RNP APCH - GPS.	MISSED APPROACH: (Do not exceed 200 KIAS until SANTY) Climb to 1100 then climbing right turn to 7000 direct SANTY and hold. *Missed approach requires minimum climb of 245 feet per NM to 1900.
<p>▼ For uncompensated Baro-VNAV systems, ▲ LNAV/VNAV NA below -15°C or above 54°C.</p>	

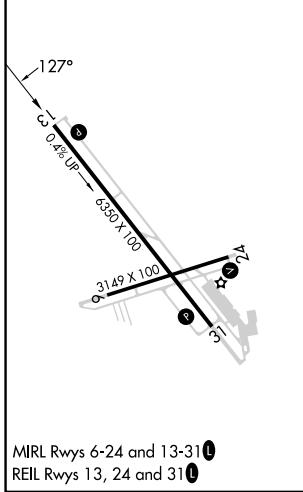
AWOS-3 120.425	NORCAL APP CON 124.525 348.675	UNICOM 123.0 (CTAF)
--------------------------	------------------------------------------	-------------------------------



SW-2, 31 OCT 2024 to 28 NOV 2024

SW-2, 31 OCT 2024 to 28 NOV 2024

ELEV 231	TDZE 215
-----------------	-----------------



VGSI and RNAV glidepath not coincident (VGSI Angle 3.00/TCH 44).

FFARM	KROPS	1100	7000	SANTY
4300	2500	↑	↷	△
6 NM		3.9 NM		1.9 NM
RWY 13		RWY 13		1.9 NM

CATEGORY	A	B	C	D
LPV DA	535-7/8	320 (400-7/8)		NA
LNAV/VNAV DA	1055-2 1/2	840 (900-2 1/2)		NA
LNAV/VNAV DA*	564-1	349 (400-1)		NA
LNAV MDA	840-1	625 (700-1)	840-1 3/4 625 (700-1 3/4)	NA