

WAAS CH <b>53535</b> <b>W18A</b>	APP CRS <b>182°</b>	Rwy Idg <b>3197</b> TDZE <b>337</b> Apt Elev <b>337</b>
--	------------------------	---

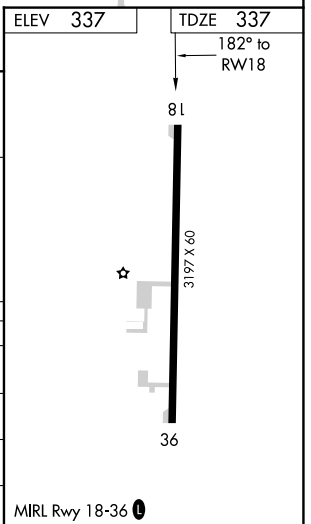
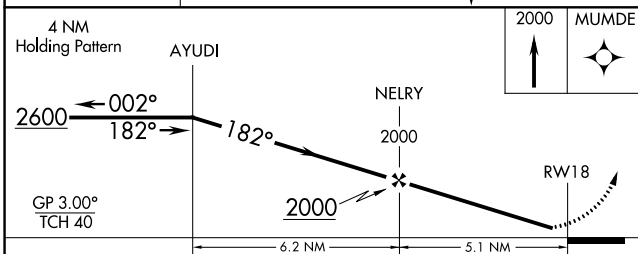
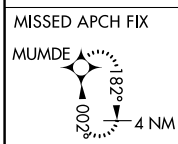
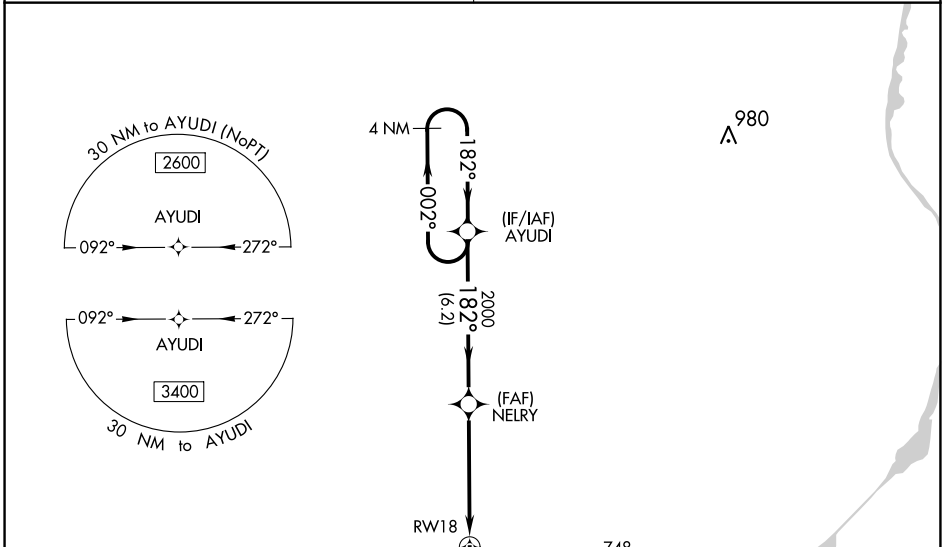
# RNAV (GPS) RWY 18

OKOLONA MUNI/RICHARD STOVALL FLD (5A4)

**NA** Baro-VNAV NA. DME/DME RNP-0.3 NA. Use Tupelo altimeter setting; when not received, use Columbus Air Force Base altimeter setting and increase all DA 41 feet and all MDA 60 feet, increase LPV and LNAV/VNAV all Cats visibility 1/8 mile, LNAV Cat C visibility 1/2 mile. Rwy 18 helicopter visibility reduction below 3/4 SM NA.

**MISSED APPROACH:** Climb to 2000 direct MUMDE and hold.

COLUMBUS APP CON ★ <b>126.075 229.15</b>	CTAF <b>122.9 0</b>
---	------------------------



CATEGORY	A	B	C	D
LPV DA	624-1 287 (300-1)			NA
LNAV/VNAV DA	669-1 332 (400-1 1/8)			NA
LNAV MDA	820-1 483 (500-1)	820-1 483 (500-1 3/8)		NA
<b>C</b> CIRCLING	920-1 583 (600-1)	1080-2 743 (800-2 1/4)		NA

MIRL Rwy 18-36 0

SC-4, 08 AUG 2024 to 05 SEP 2024

SC-4, 08 AUG 2024 to 05 SEP 2024