

WAAS CH <b>50205</b> <b>W12A</b>	APP CRS <b>123°</b>	Rwy Idg <b>5499</b> TDZE <b>241</b> Apt Elev <b>247</b>
--	------------------------	---

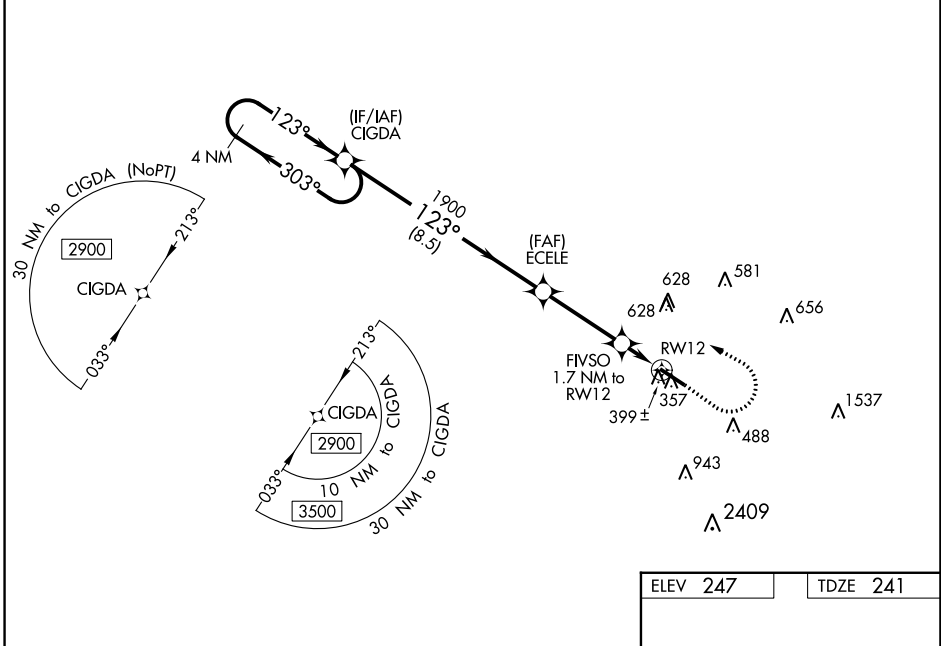
# RNAV (GPS) RWY 12

JOHN BELL WILLIAMS (JVV)

**⚠** For uncompensated Baro-VNAV systems, LNAV/VNAV NA below -15°C (5°F) or above 54°C (130°F). DME/DME RNP-0.3 NA. Circling NA for Cat D southwest of Rwy 12-30. Baro-VNAV and VDP NA when using Hawkins Fld altimeter setting. Helicopter visibility reduction below ¼ SM NA. When local altimeter setting not received, use Hawkins Fld altimeter setting: increase all DA 36 feet, all MDA 40 feet, all LNAV/VNAV visibilities ½ mile, LNAV Cat C and D visibilities ¼ mile, and Circling Cat C and D visibility ¼ mile.

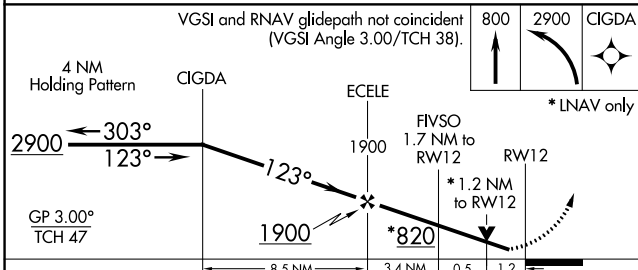
**MISSED APPROACH:** Climb to 800 then climbing left turn to 2900 direct CIGDA and hold.

AWOS-3PT <b>118.675</b>	JACKSON APP CON* <b>125.25 319.2</b>	UNICOM <b>123.0</b> (CTAF) <b>0</b>
----------------------------	---	--



SC-4, 03 OCT 2024 to 31 OCT 2024

SC-4, 03 OCT 2024 to 31 OCT 2024



ELEV 247	TDZE 241
----------	----------

CATEGORY	A	B	C	D
LPV DA		441-¾	200 (200-¾)	
LNAV/VNAV DA		662-1⅓	421 (500-1⅓)	
LNAV MDA	660-1	419 (500-1)	660-1⅓	419 (500-1⅓)
<b>C</b> CIRCLING	800-1	553 (600-1)	980-2 733 (800-2)	980-2¼ 733 (800-2¼)

