

LOC/DME I-JVW 108.55 Chan 22(Y)	APP CRS 124°	Rwy Idg 5499 TDZE 241 Apt Elev 247
--	------------------------	---

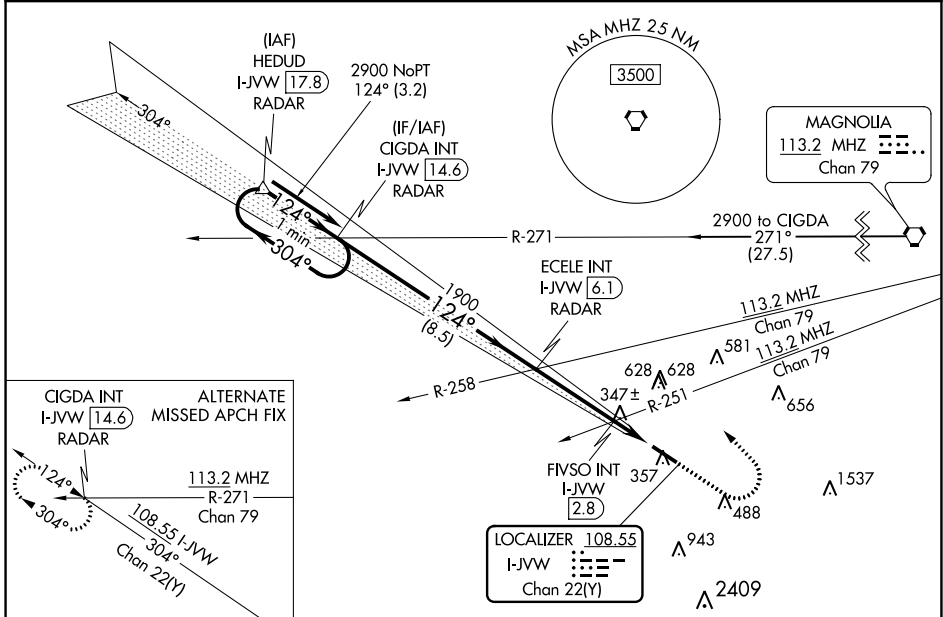
ILS or LOC RWY 12

JOHN BELL WILLIAMS (JVW)

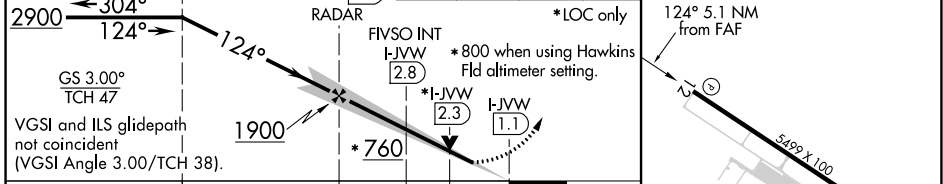
⚠ VDP NA with Hawkins fld altimeter setting. Circling NA for Cat D southwest of Rwy 12-30.
⚠ When local altimeter setting not received, use Hawkins fld altimeter setting: increase all DA 36 feet, all MDA 40 feet, S-LOC 12 Cat C and D visibilities ¼ mile, and Circling Cat C and D visibilities ¼ mile, increase FIVSO fix minimums S-LOC 12 Cat C and D visibilities ¼ mile and Circling Cat C and D visibilities ¼ mile.

MISSED APPROACH: Climb to 800 then climbing left turn to 2900 on heading 316° and on MHz VORTAC R-271 to CIGDA INT/I-JVW 14.6 DME and hold.

AWOS-3PT 118.675	JACKSON APP CON ★ 125.25 319.2	UNICOM 123.0 (CTAF)
----------------------------	--	-------------------------------



One Minute Holding Pattern CIGDA INT I-JVW 14.6 RADAR	ECELE INT I-JVW 6.1 RADAR	800	2900	hdg 316°	MHZ R-271	CIGDA INT	ELEV 247	TDZE 241
---	---------------------------	-----	------	----------	-----------	-----------	----------	----------



CATEGORY	A	B	C	D
S-ILS 12	441 ^{-3/4} 200 (200 ^{-3/4})			
S-LOC 12	760-1	519 (600-1)	760 ^{-1 3/8}	519 (600 ^{-1 3/8})
C CIRCLING	800-1	553 (600-1)	733 (800-2)	733 (800-2 1/4)
FIVSO FIX MINIMUMS (DUAL VOR RECEIVERS OR DME REQUIRED)				
S-LOC 12	660-1	419 (500-1)	660 ^{-1 1/8}	419 (500 ^{-1 1/8})
C CIRCLING	800-1	553 (600-1)	980-2	980-2 1/4
			733 (800-2)	733 (800-2 1/4)

MIRL Rwy 12-30
 REIL Rwy 12 and 30
 FAF to MAP 5.1 NM

Knots	60	90	120	150	180
Min:Sec	5:06	3:24	2:33	2:02	1:42

SC-4, 03 OCT 2024 to 31 OCT 2024

SC-4, 03 OCT 2024 to 31 OCT 2024