

APP CRS <b>177°</b>	Rwy Idg <b>5001</b>
TDZE <b>874</b>	
Apt Elev <b>874</b>	

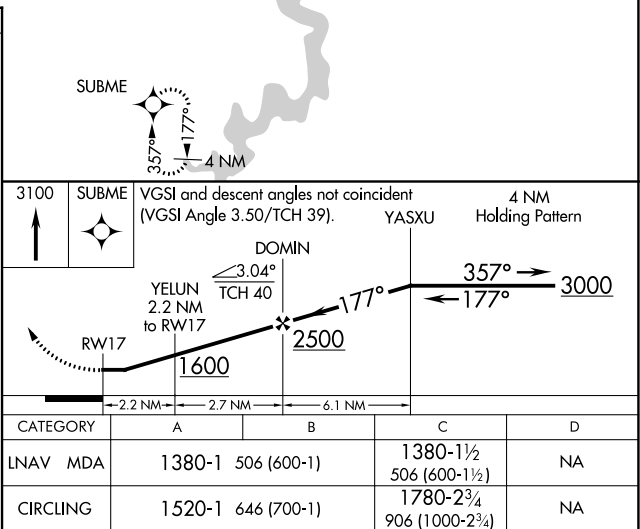
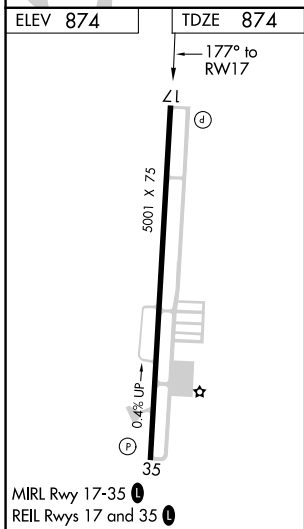
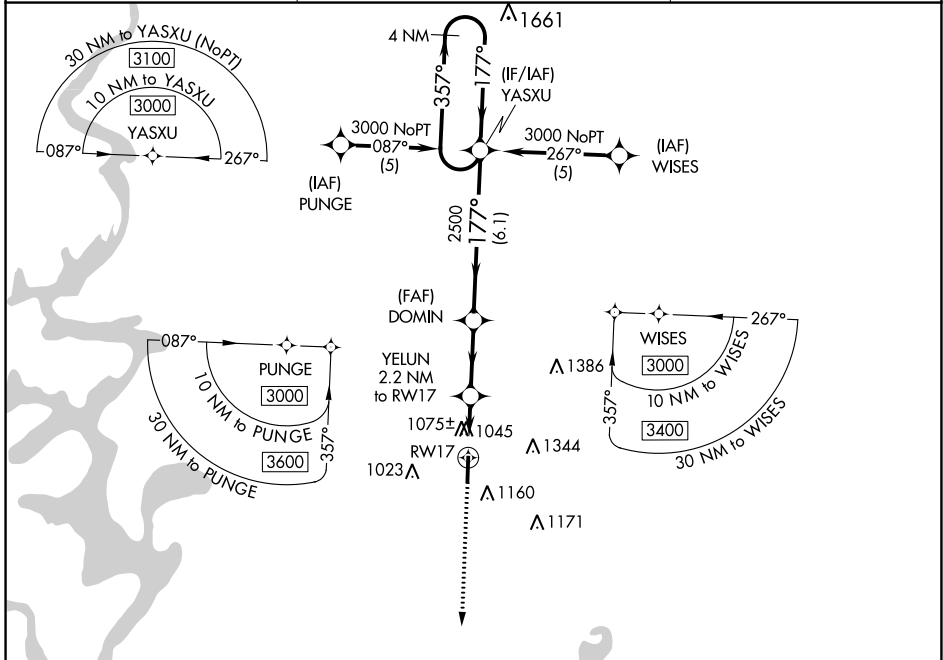
# RNAV (GPS) RWY 17

TAHLEQUAH MUNI (TQH)

**⚠** DME/DME RNP-0.3 NA. Visibility reduction by helicopters NA. When local altimeter setting not received, use Muskogee altimeter setting and increase all MDAs 100 feet and increase LNAV Cat C visibility and Circling Cat C visibility 1/4 SM.

**⚠** MISSED APPROACH: Climb to 3100 direct SUBME and hold.

AWOS-3P <b>118.425</b>	MEMPHIS CENTER <b>126.1 269.0</b>	UNICOM <b>122.8 (CTAF) ①</b>
---------------------------	--------------------------------------	---------------------------------



SC-1, 31 OCT 2024 to 28 NOV 2024

SC-1, 31 OCT 2024 to 28 NOV 2024