

APP CRS	Rwy Idg	2949
152°	TDZE	1279
	Apt Elev	1279

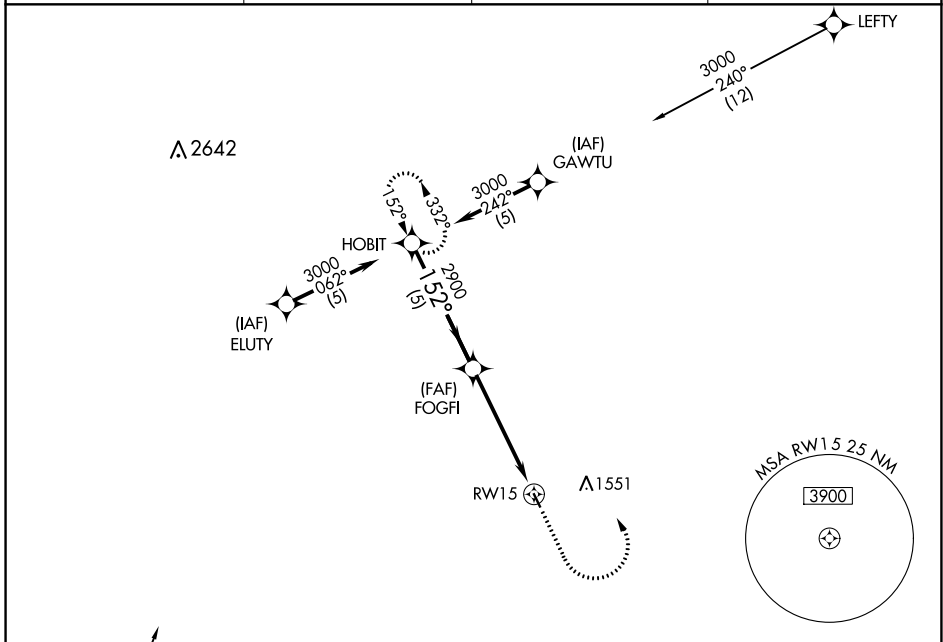
GPS RWY 15

ELLEN CHURCH FLD (CJJ)

⚠ Use Decorah Muni altimeter setting. Procedure NA at night.
⚠ NA Rwy 15 helicopter visibility reduction below 1 SM NA.

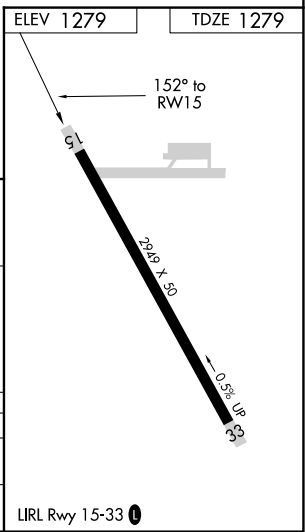
MISSED APPROACH: Climb to 2400, then climbing left turn to 3000 direct HOBIT and hold.

DEH AWOS-3 120.925	MINNEAPOLIS CENTER 118.85	UNICOM 122.8 (CTAF)	122.7 0
------------------------------	-------------------------------------	-------------------------------	-----------------------



NC-3, 31 OCT 2024 to 28 NOV 2024

NC-3, 31 OCT 2024 to 28 NOV 2024



	HOBIT		2400	3000	HOBIT
	3000		↑	↻	✧
Procedure Turn NA	152°				
		FOGFI			
		2900			
					RWY 15
					2.98° ≥ TCH 40
	5 NM		5 NM		

CATEGORY	A	B	C	D
S-15	1980-1	701 (800-1)	1980-2 701 (800-2)	NA
CIRCLING	1980-1	701 (800-1)	1980-2 701 (800-2)	NA