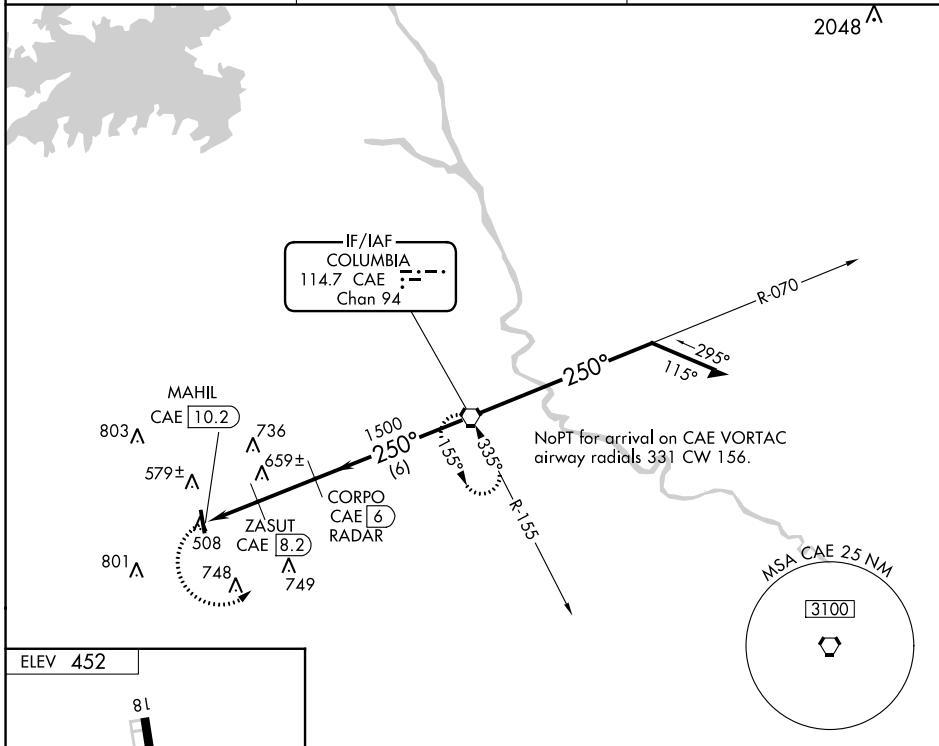


VORTAC CAE 114.7 Chan 94	APP CRS 250°	Rwy Idg TDZE Apt Elev	N/A N/A 452
--	------------------------	-----------------------------	--

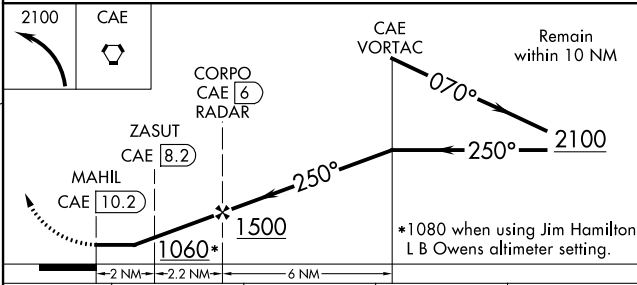
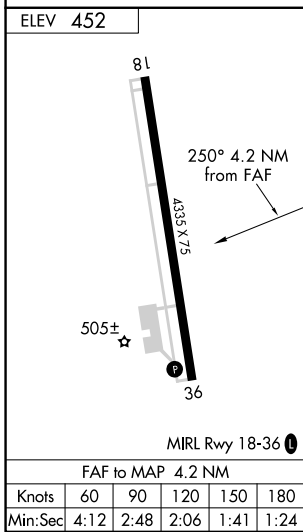
VOR-A
LEXINGTON COUNTY (6J0)

DME or RADAR required.		MISSED APPROACH: Climbing left turn to 2100 direct CAE VORTAC and hold.
<p>▼ Use Columbia Metro altimeter setting; when not received, use ▲ NA Jim Hamilton L B Owens altimeter setting and increase all MDA 20 feet.</p>		
CAE ASOS 120.15	COLUMBIA APP CON 124.15 338.2	UNICOM 123.0 (CTAF) 0



SE-2, 03 OCT 2024 to 31 OCT 2024

SE-2, 03 OCT 2024 to 31 OCT 2024



CATEGORY	A	B	C	D
CIRCLING	1060-1	608 (700-1)	NA	
ZASUT FIX MINIMUMS				
CIRCLING	980-1 528 (600-1)	1060-1 608 (700-1)	NA	