

WAAS CH 49031 W13A	APP CRS 139°	Rwy Idg 4399 TDZE 1942 Apt Elev 1944
--	------------------------	---

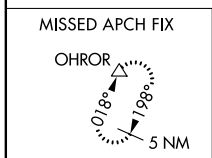
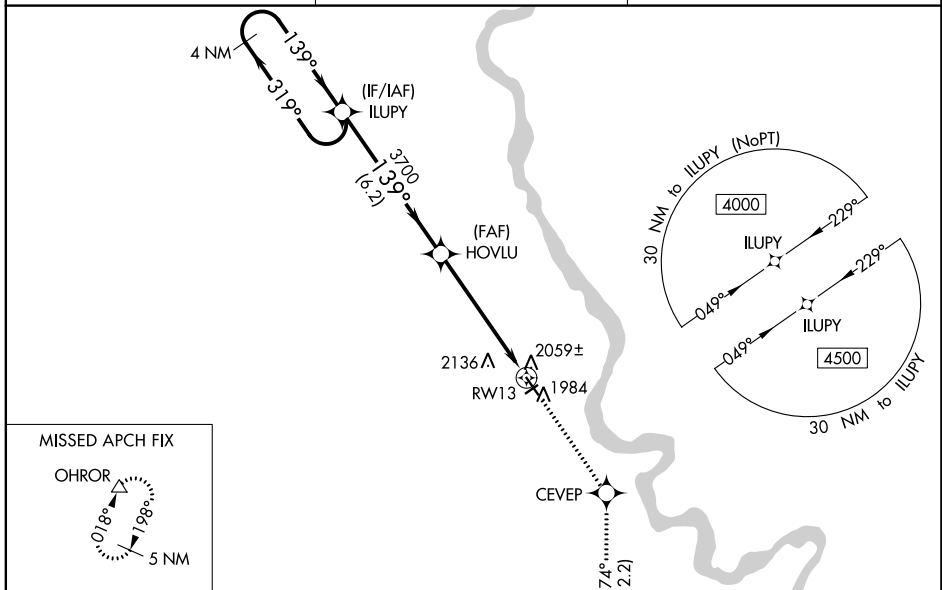
RNAV (GPS) RWY 13

MANDAN RGNL/LAWLER FLD (Y19)

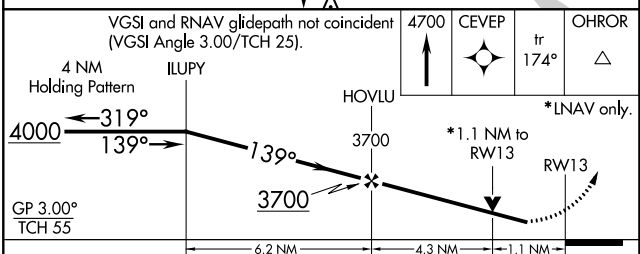
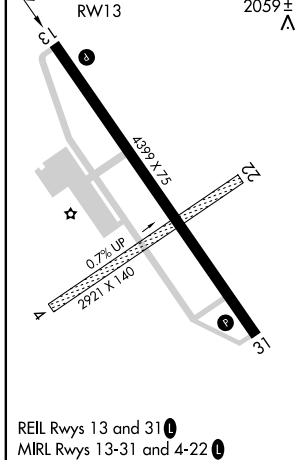
ASR Baro-VNAV NA when using Bismarck altimeter setting. For uncompensated Baro-VNAV systems, LNAV/VNAV NA below -18°C (0°F) or above 54°C (130°F). DME/DME RNP-0.3 NA. Helicopter visibility reduction below 3/4 SM not authorized. VDP NA when using Bismarck altimeter setting. When local altimeter setting not received, use Bismarck altimeter setting and increase all DA 54 feet and LPV all Cats visibility 1/4 mile, LNAV/VNAV all Cats visibility 1/8 mile, increase all MDA 60 feet and LNAV Cat C/D and Circling Cat D visibility 1/4 mile. Circling to Rwy 4 and 22 NA.

MISSED APPROACH: Climb to 4700 direct CEVEP and on track 174° to OHROR and hold.

AWOS-3 118.225	BISMARCK APP CON ★ 126.3 298.9	UNICOM 122.8 (CTAF) 0
--------------------------	--	---------------------------------



ELEV 1944	TDZE 1942
------------------	------------------



CATEGORY	A	B	C	D
LPV DA		2192-3/4	250 (300-3/4)	
LNAV/VNAV DA		2244-1	302 (300-1)	
LNAV MDA		2320-1	378 (400-1)	
C CIRCLING	2360-1 416 (500-1)	2460-1 516 (600-1)	2460-1 1/2 516 (600-1 1/2)	2560-2 616 (700-2)

NC-1, 03 OCT 2024 to 31 OCT 2024

NC-1, 03 OCT 2024 to 31 OCT 2024