

WAAS CH 65619 W06A	APP CRS 058°	Rwy Idg 12000 TDZE 27 Apt Elev 30
--	------------------------	--

RNAV (GPS) RWY 6

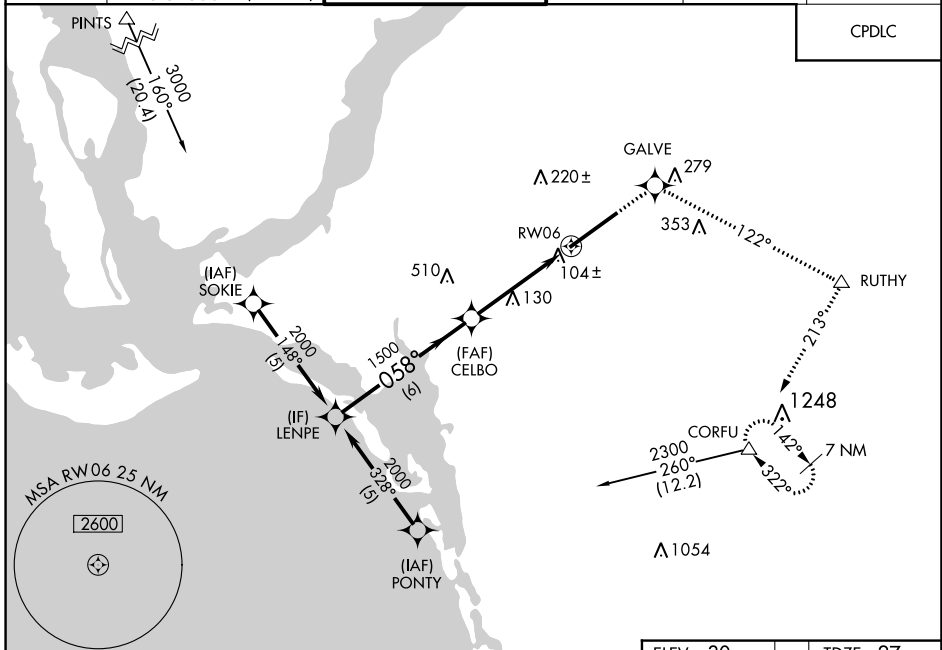
SOUTHWEST FLORIDA INTL (RSW)

▼ For uncompensated Baro-VNAV systems, LNAV/VNAV NA below -15°C (5°F) or above 48°C (118°F). DME/DME RNP-0.3 NA. For inoperative MALSR increase LPV all Cats visibility to RVR 5000, and LNAV Cat D visibility to RVR 6000.



MISSED APPROACH: Climb to 2300 direct GALVE and via 122° track to RUTHY and right turn via 213° track to CORFU and hold.

D-ATIS 124.65	FORT MYERS APP CON ★ 125.15 306.2 (RWY 6) 126.8 306.2 (RWY 24)	FORT MYERS TOWER ★ 128.75 (CTAF) 0 257.8	GND CON 121.9 257.8	CLNC DEL 132.075	UNICOM 122.95
-------------------------	--	---	-------------------------------	----------------------------	-------------------------

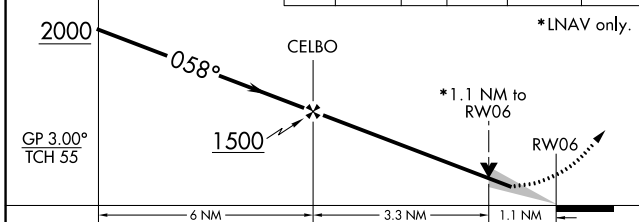


SE-3, 03 OCT 2024 to 31 OCT 2024

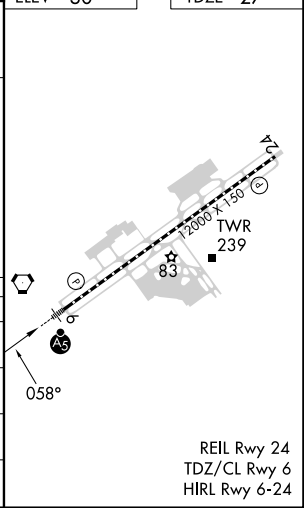
SE-3, 03 OCT 2024 to 31 OCT 2024

Procedure Turn NA	2300	GALVE	tr 122°	RUTHY	tr 213°	CORFU
-------------------	------	-------	---------	-------	---------	-------

ELEV 30	TDZE 27
---------	---------



CATEGORY	A	B	C	D
LPV DA		330/24	303 (300-½)	
LNAV/VNAV DA		380/40	353 (400-¾)	
LNAV MDA	440/24	413 (500-½)	440/40 413 (500-¾)	440/50 413 (500-1)
CIRCLING	500-1	470 (500-1)	580-1½ 550 (600-1½)	660-2 630 (700-2)



REIL Rwy 24
TDZ/CL Rwy 6
HIRL Rwy 6-24