

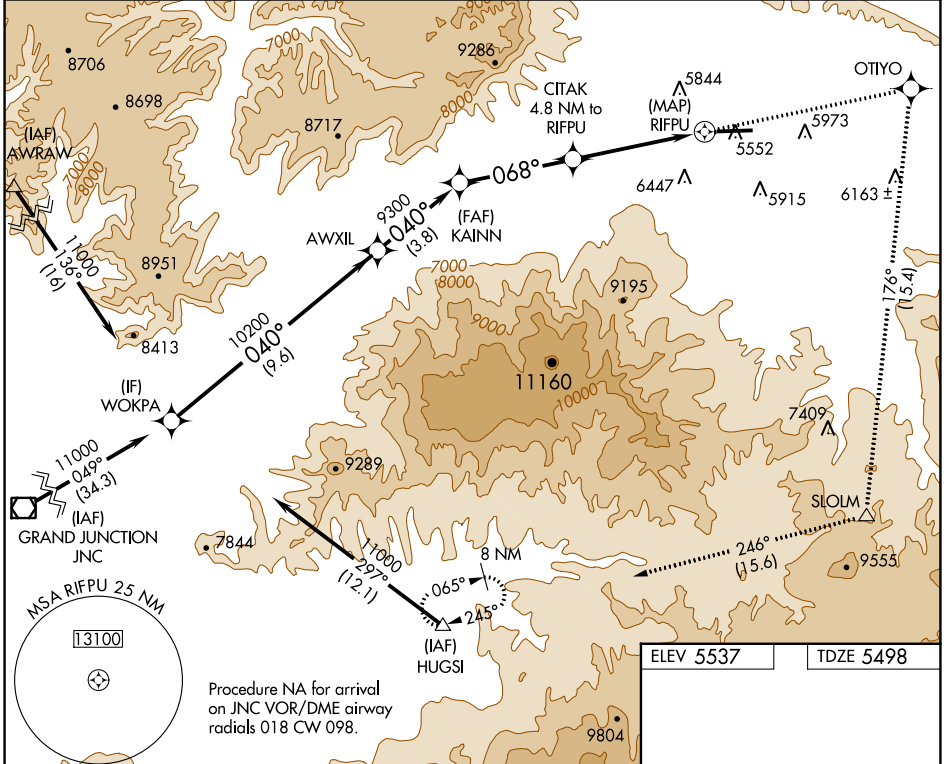
APP CRS	Rwy Idg	7000
068°	TDZE	5498
	Apt Elev	5537

RNAV (GPS) Y RWY 8

RIFLE GARFIELD COUNTY (RIL)

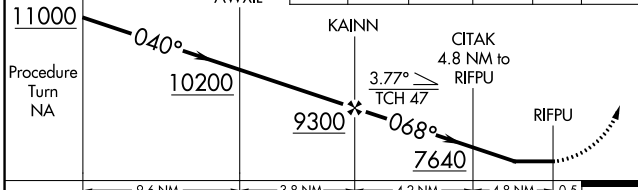
<p>DME/DME RNP- 0.3 NA. Visibility reduction by helicopters NA. -1.4°C Circling NA south of Rwy 8-26 at night.</p>	<p>MISSED APPROACH: Climb to 13000 direct OTIYO and right turn on track 176° to SLOLM and on track 246° to HUGSI and hold, continue climb-in-hold to 13000.</p>
---	---

ASOS 135.275	DENVER CENTER 134.95 327.075	UNICOM 122.8 (CTAF) 0
------------------------	--	---------------------------------



Procedure NA for arrival on JNC VOR/DME airway radials 018 CW 098.

VGSI and descent angles not coincident (VGSI Angle 3.00/TCH 47).	13000	OTIYO	SLOLM	HUGSI
			tr 176°	tr 246°



CATEGORY	A	B	C	D
LNNAV MDA	7420-1¼ 1922 (1900-1¼)	7420-1½ 1922 (1900-1½)	7420-3 1922 (1900-3)	NA
CIRCLING	7420-1¼ 1883 (1900-1¼)	7420-1½ 1883 (1900-1½)	7420-3 1883 (1900-3)	NA

ELEV 5537	TDZE 5498
-----------	-----------

HIRL Rwy 8-26 0
REIL Rwy 8 0

SW-1, 18 MAY 2023 to 15 JUN 2023

SW-1, 18 MAY 2023 to 15 JUN 2023