

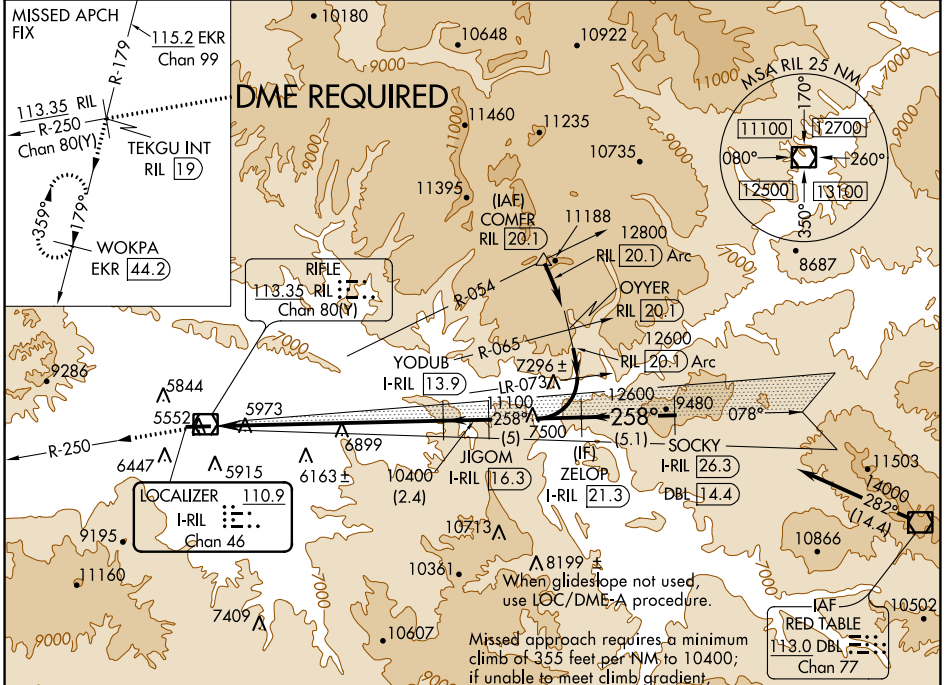
LOC/DME I-RIL <b>110.9</b> Chan 46	APP CRS <b>258°</b>	Rwy Idg TDZE Apt Elev	<b>7000</b> <b>5537</b> <b>5537</b>
--	------------------------	-----------------------------	---

# ILS RWY 26

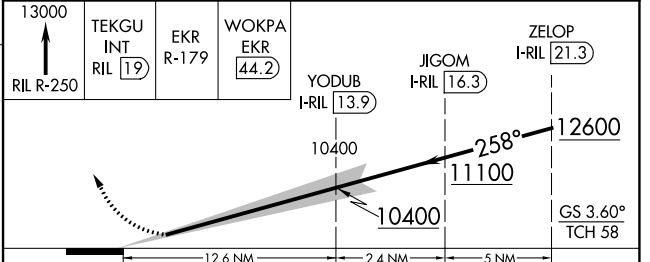
RIFLE GARFIELD COUNTY (R.I.L.)

	VISIBILITY: Visibility reduction by helicopters NA. Use I-RIL DME when on localizer course. DME required. Circling not authorized.	ODALS:	MISSED APPROACH: Climb to 13000 on RIL VOR/DME R-250 to TEKGU INT/RIL 19 DME and on EKR VOR/DME R-179 to WOKPA/EKR 44.2 DME and hold.
--	--	--------	---

ASOS <b>135.275</b>	DENVER CENTER <b>134.95 327.075</b>	UNICOM <b>122.8 (CTAF)</b>
------------------------	--	-------------------------------



ELEV 5537	TDZE 5537
-----------	-----------



CATEGORY	A	B	C	D
S-ILS 26	6800-4	1263 (1300-4)		NA

RIFLE, COLORADO  
Amdt 3B 17AUG17

39°32'N-107°44'W

# RIFLE GARFIELD COUNTY (R.I.L.) ILS RWY 26

SW-1, 18 MAY 2023 to 15 JUN 2023

SW-1, 18 MAY 2023 to 15 JUN 2023