

WAAS CH <b>66032</b> WINN1A	APP CRS <b>010°</b>	Rwy Idg TDZE Apt Elev	<b>4021</b> <b>3611</b> <b>3616</b>
-----------------------------------	------------------------	-----------------------------	---

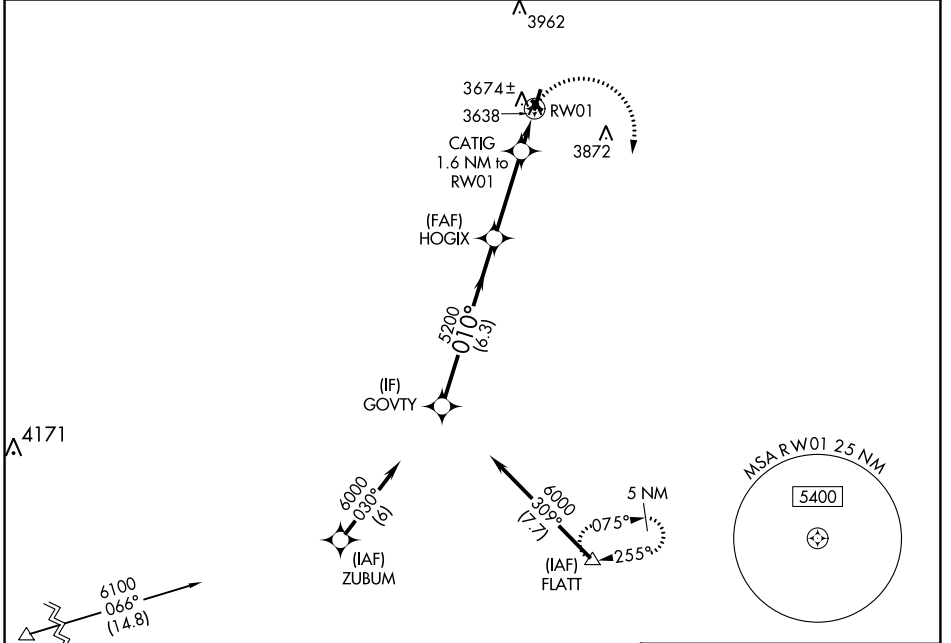
# RNAV (GPS) RWY 1

LITTLEFIELD TAYLOR BROWN MUNI (LIU)

**NA** Baro-VNAV NA. Use Lubbock altimeter setting. DME/DME RNP-0.3 NA. Helicopter visibility reduction below 3/4 SM NA.

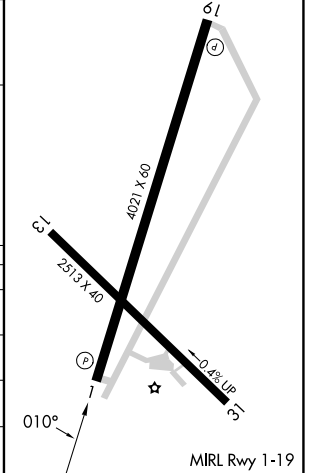
MISSED APPROACH: Climbing right turn to 6000 direct FLATT and hold.

LBB ASOS <b>125.3 270.275</b>	LUBBOCK APP CON <b>119.2 351.8</b>	UNICOM <b>122.8</b> (CTAF)
----------------------------------	---------------------------------------	-------------------------------



ELEV 3616	TDZE 3611
-----------	-----------

CATEGORY	A	B	C	D
LPV DA	3982-1¼	371 (400-1¼)		NA
LNNAV/VNAV DA	3982-1¼	371 (400-1¼)		NA
LNNAV MDA	4060-1	449 (500-1)		NA
<b>C</b> CIRCLING	4100-1 484 (500-1)	4240-1 624 (700-1)		NA



SC-2, 03 OCT 2024 to 31 OCT 2024

SC-2, 03 OCT 2024 to 31 OCT 2024