

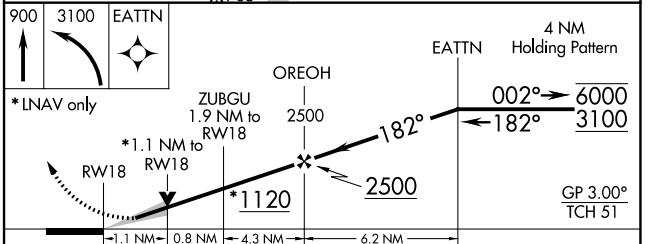
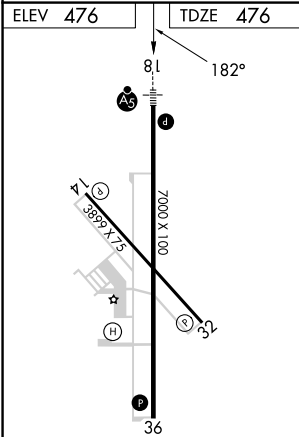
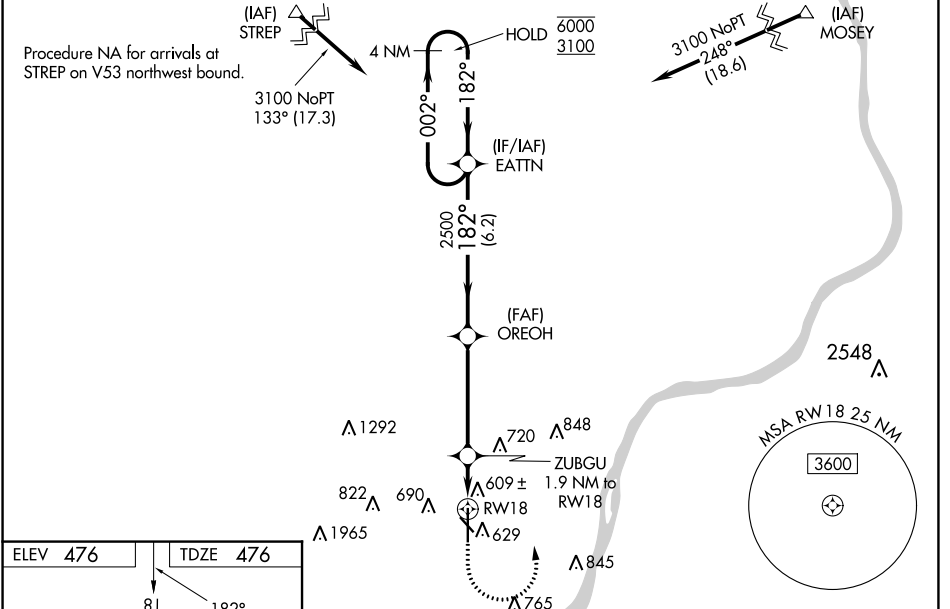
WAAS CH 82426	APP CRS 182°	Rwy Idg TDZE Apt Elev	7000 476 476
W18A			

RNAV (GPS) RWY 18

CLARK RGNL (JVY)

RNP APCH.	MALSR	MISSED APPROACH: Climb to 900 then climbing left turn to 3100 direct EATTN and hold.
<p>⚠ Circling NA for Cat D southwest of Rwy 14 and 36. Circling Rwy 14, 32 NA at night. Baro-VNAV and VDP NA when using Louisville Muhammad Ali Intl altimeter setting. For uncompensated Baro-VNAV systems, LNAV/VNAV NA below -15°C or above 54°C. For inop ALS, increase LNAV/VNAV visibility to 1 SM. When local altimeter setting not received, use Louisville Muhammad Ali Intl altimeter setting: increase all DA 30 feet and LNAV/VNAV visibility ½ SM; increase all MDAs 40 feet, LNAV visibility Cats C and D ½ SM and Circling visibility Cat C ¼ SM. For inop ALS when using Louisville Muhammad Ali Intl altimeter setting, increase LNAV/VNAV visibility to 1½ SM.</p>		

AWOS-3 118.575	LOUISVILLE APP CON 132.075 327.0	CLNC DEL 118.05	UNICOM 122.7 (CTAF) 0
--------------------------	--	---------------------------	---------------------------------



CATEGORY	A	B	C	D
LPV DA		676-½	200 (200-½)	
LNAV/VNAV DA		850-5/8	374 (400-5/8)	
LNAV MDA	860-½	384 (400-½)	860-5/8	384 (400-5/8)
C CIRCLING	1000-1 524 (600-1)	1040-1 564 (600-1)	1060-1½ 584 (600-1½)	1100-2 624 (700-2)

REIL Rwy 14 and 32
REIL Rwy 36
MIRL Rwy 14-32 and 18-36

EC-2, 03 OCT 2024 to 31 OCT 2024

EC-2, 03 OCT 2024 to 31 OCT 2024