

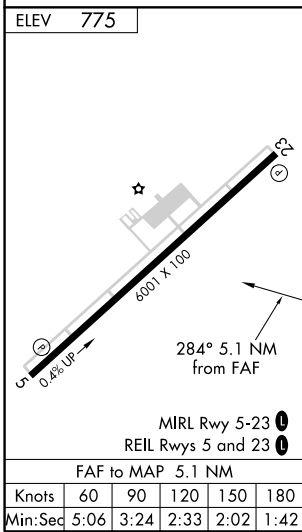
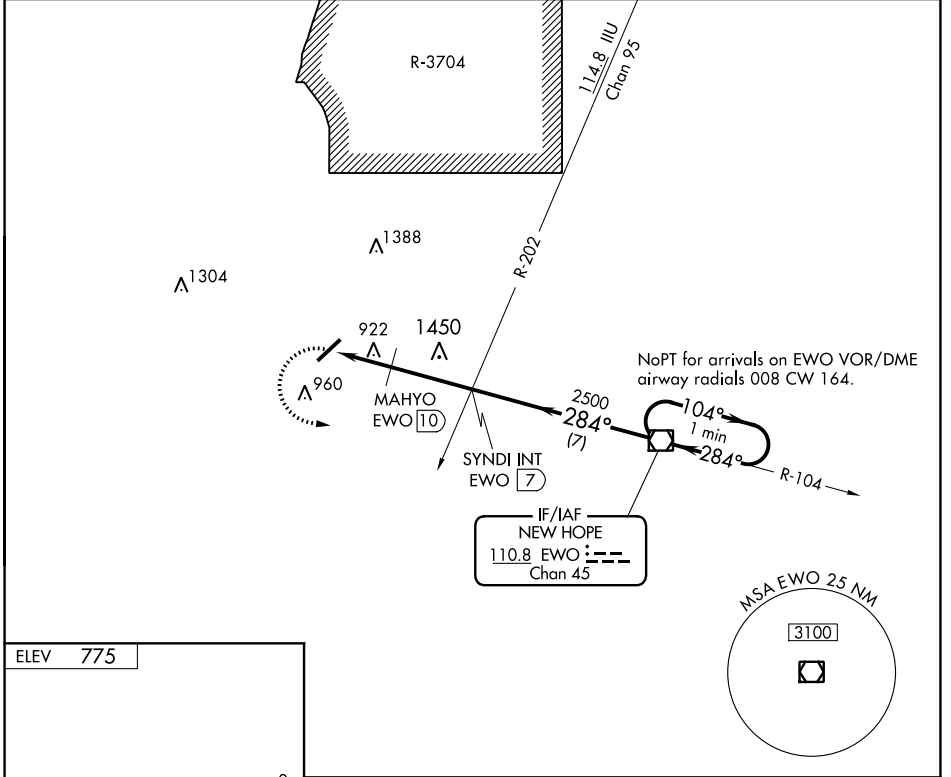
VOR/DME EWO 110.8 Chan 45	APP CRS 284°	Rwy Idg TDZE Apt Elev	N/A N/A 775
---	------------------------	-----------------------------	--

VOR-A
ADDINGTON FLD (EKX)

NA If local altimeter setting not received, use Louisville Muhammad Ali Intl altimeter setting and increase all MDAs 120 feet.

MISSED APPROACH: Climbing left turn to 2500 direct to EWO VOR/DME and hold.

AWOS-3 121.025	LOUISVILLE APP CON 132.075 327.0	CLNC DEL 119.45	UNICOM 122.8 (CTAF) 0
--------------------------	--	---------------------------	---------------------------------



2500	EWO	SYNDI INT EWO 7	EWO VOR/DME	One Minute Holding Pattern
2500	MAHYO EWO 10	2500	2500	
1700*	2500	2500	2500	
	2.1 NM	3 NM	7 NM	
CATEGORY	A	B	C	D
CIRCLING	1700-1¼ 925 (1000-1¼)		1700-2¾ 925 (1000-2¾)	1700-3 925 (1000-3)
MAHYO FIX MINIMUMS				
CIRCLING	1240-1 465 (500-1)	1260-1 485 (500-1)	1260-1½ 485 (500-1½)	1360-2 585 (600-2)

*1820 when using Louisville Intl altimeter setting.

SE-1, 30 DEC 2021 to 27 JAN 2022

SE-1, 30 DEC 2021 to 27 JAN 2022