

VORTAC TKO 109.8 Chan 35	APP CRS 254°	Rwy Idg TDZE Apt Elev 1800	N/A N/A 1800
--	------------------------	--	---

VOR-A

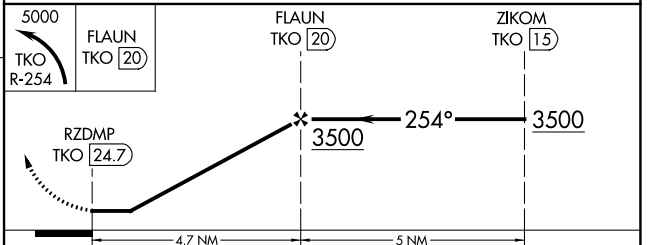
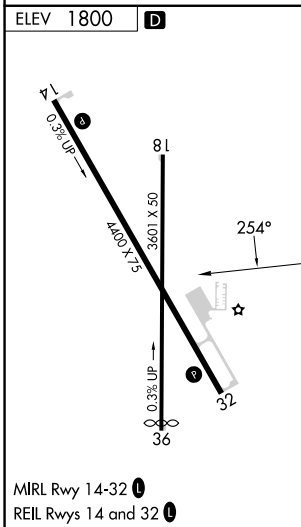
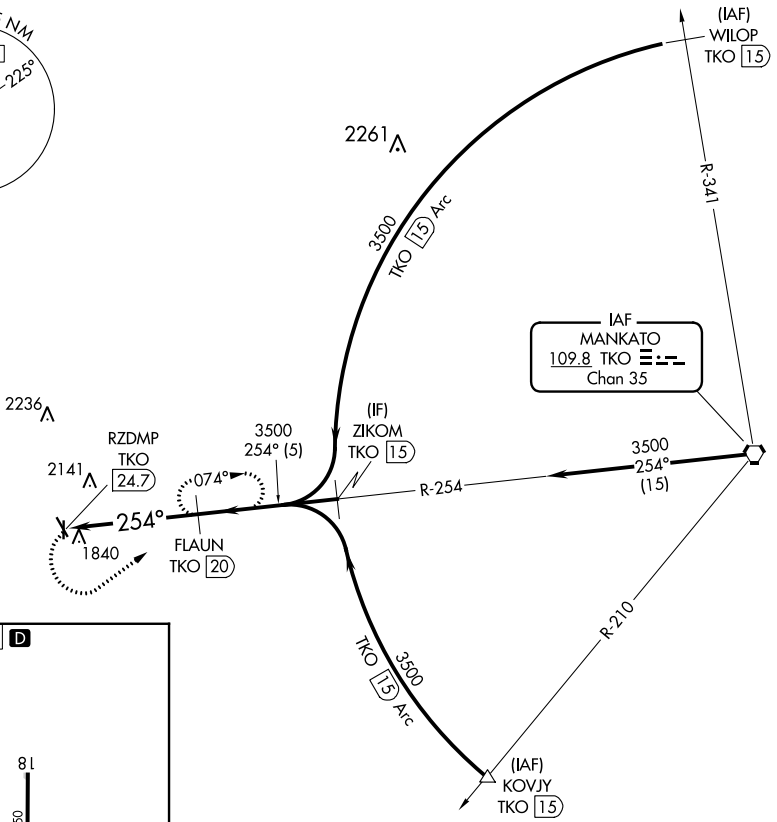
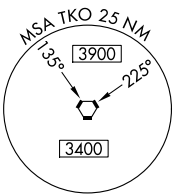
SMITH CENTER MUNI (K82)

DME required.

When local altimeter setting not received use Blosser Muni altimeter setting and increase all MDA 180 and Circling Cat B visibility to 1½ SM. Circling to Rwy 36 NA at night.

MISSED APPROACH: Climbing left turn to 5000 on TKO VORTAC R-254 to FLAUN/TKO 20 DME and hold, continue climb-in-hold to 5000.

AWOS-3PT 118.45	MINNEAPOLIS CENTER 119.4 278.8	UNICOM 122.8 (CTAF)
---------------------------	--	-------------------------------



CATEGORY	A	B	C	D
C CIRCLING	2400-1 600 (600-1)	2580-1 780 (800-1)		NA

NC-2, 31 OCT 2024 to 28 NOV 2024

NC-2, 31 OCT 2024 to 28 NOV 2024