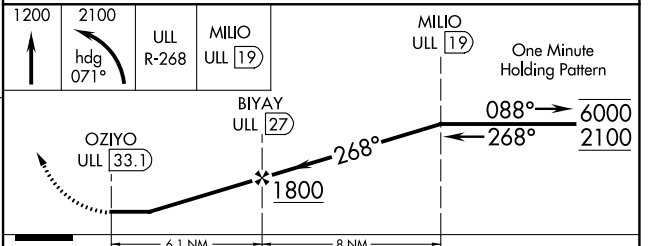
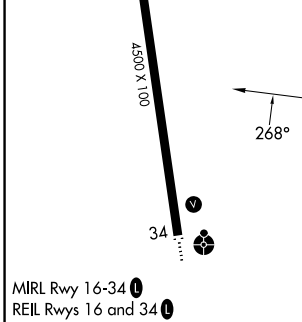
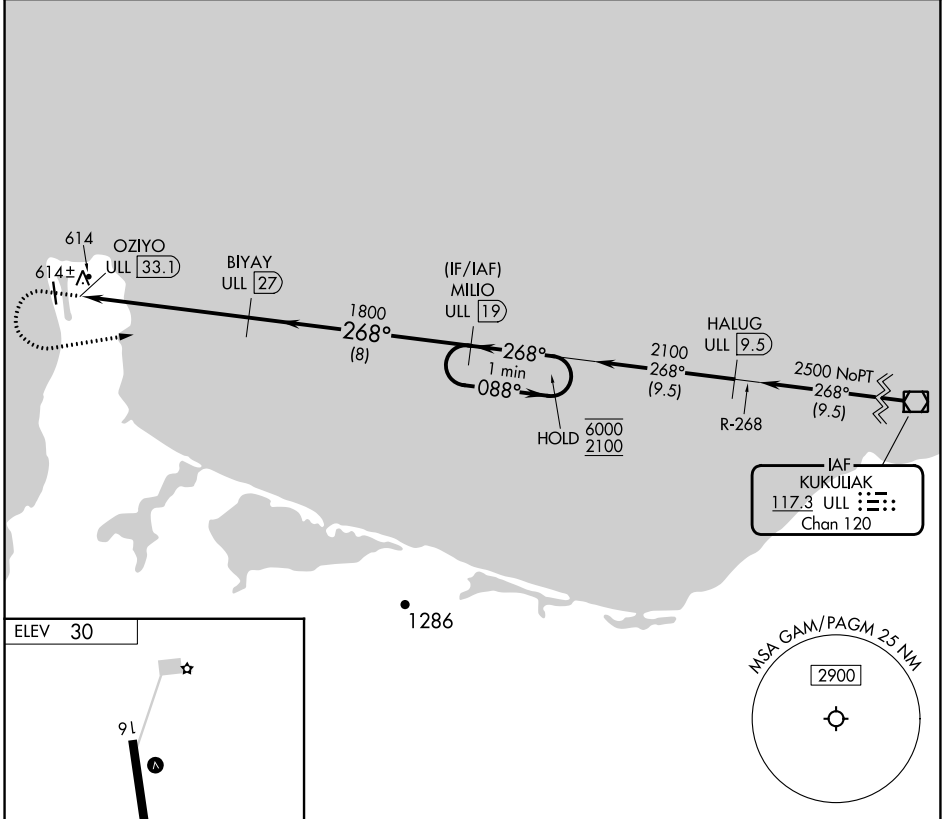


VOR/DME ULL 117.3 Chan 120	APP CRS 268°	Rwy Idg TDZE Apt Elev	N/A N/A 30
--	------------------------	-----------------------------	---------------------------------------

VOR-A
GAMBELL (GAM)(PAGM)

DME required.		MISSED APPROACH: Climb to 1200 then climbing left turn to 2100 heading 071° and on ULL VOR/DME R-268 to MILIO/ULL 19 DME and hold.	
<p>Circling NA east of Rwy 16-34. -26°C</p>			

AWOS-3P 125.9	ANCHORAGE CENTER 132.2 281.4	NOME RADIO 122.0	CTAF 122.7 0
-------------------------	--	----------------------------	------------------------



CATEGORY	A	B	C	D
CIRCLING	1000-1¼ 970 (1000-1¼)	1000-1½ 970 (1000-1½)	1000-3	970 (1000-3)

AK, 05 SEP 2024 to 31 OCT 2024

AK, 05 SEP 2024 to 31 OCT 2024