

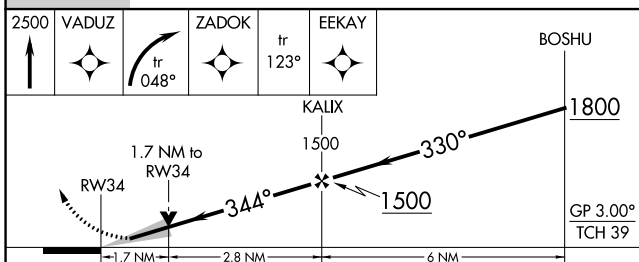
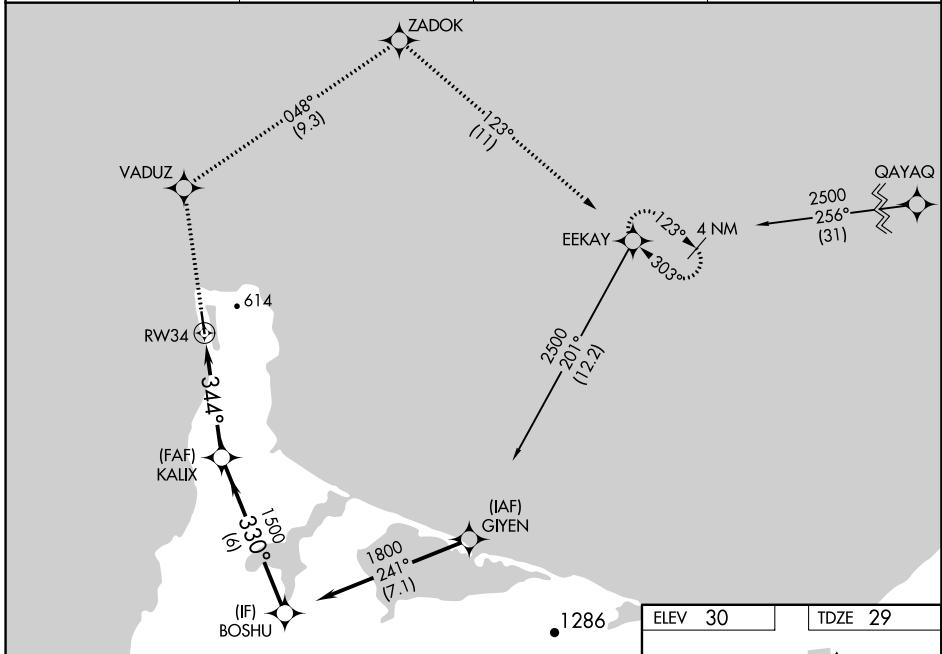
WAAS CH 82135 W34A	APP CRS 344°	Rwy Idg TDZE Apt Elev	4500 29 30
----------------------------------------	------------------------	-----------------------------	---------------------------------------

RNAV (GPS) RWY 34

GAMBELL (GAM) (PAGM)

RNP APCH - GPS.	ODALS	MISSED APPROACH: Climb to 2500 direct VADUZ then right turn on track 048° to ZADOK and on track 123° to EEKAY and hold.
<p>▼ Circling NA east of Rwy 16-34. For uncompensated Baro-VNAV systems, LNAV/VNAV NA below -20°C or above 54°C. For inop ALS, increase LNAV/VNAV Cat A and B visibility to 1 1/4 SM. Inop table does not apply to LPV all Cats and LNAV Cats A and B visibilities.</p> <p>⚠ -26°C</p>		

AWOS-3P 125.9	ANCHORAGE CENTER 132.2 281.4	NOME RADIO 122.0	CTAF 122.70
-------------------------	----------------------------------------	----------------------------	-----------------------



ELEV 30	TDZE 29
<p>MIRL Rwy 16-34</p> <p>REIL Rws 16 and 34</p>	

CATEGORY	A	B	C	D
LPV DA	229-1 200 (200-1)			
LNAV/VNAV DA	459-1 1/8 430 (500-1 1/8)			
LNAV MDA	600-1 571 (600-1)	600-1 1/2 571 (600-1 1/2)		
CIRCLING	600-1 570 (600-1)	600-1 5/8 570 (600-1 5/8)		660-2 630 (700-2)

AK, 05 SEP 2024 to 31 OCT 2024

AK, 05 SEP 2024 to 31 OCT 2024