

WAAS CH 99347 W21A	APP CRS 210°	Rwy Idg 4000 TDZE 21 Apt Elev 21
--	------------------------	---

RNAV (GPS) RWY 21

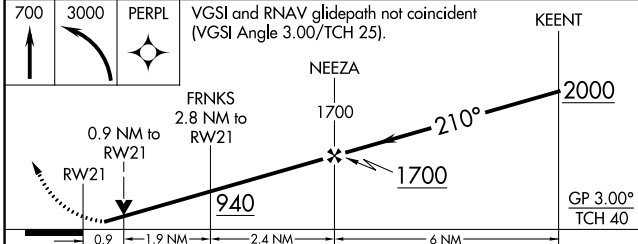
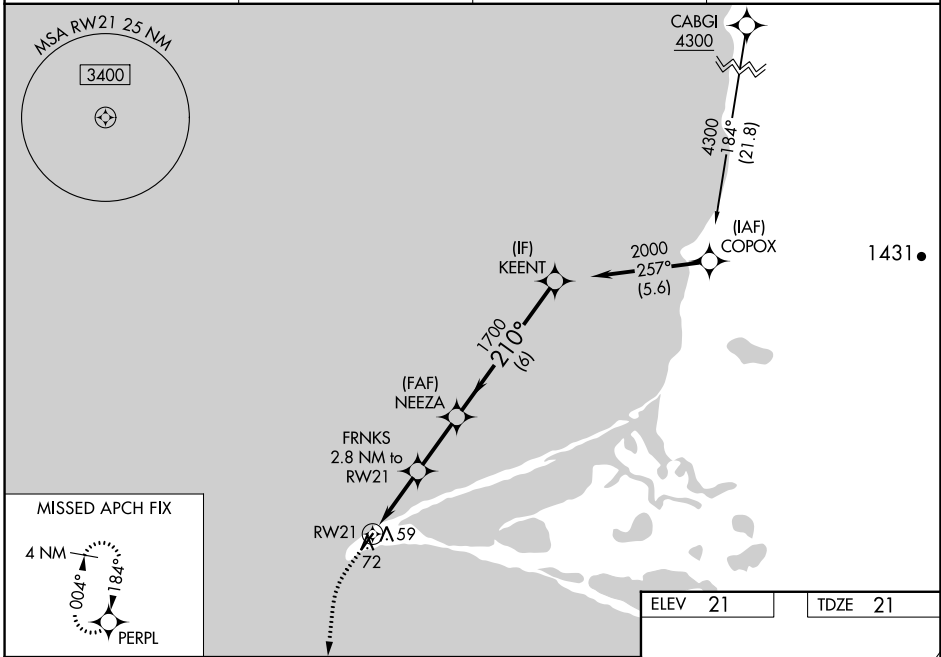
POINT HOPE (PHO) (PAPO)

RNP APCH - GPS.

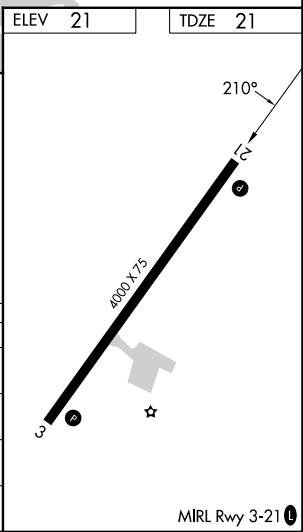
⚠ For uncompensated Baro-VNAV systems, LNAV/VNAV NA below -20°C or above 54°C. Rwy 21 helicopter visibility reduction below 3/4 SM NA. Baro-VNAV and VDP NA when using LUR/PALU altimeter setting. When local altimeter setting not received, use LUR/PALU altimeter setting and increase LPV DA to 303 feet; increase LNAV/VNAV DA to 353 feet; increase all MDAs 100 feet and LNAV visibility Cat C/D 1/2 SM.

MISSED APPROACH: Climb to 700 then climbing left turn to 3000 direct PERPL and hold, continue climb-in-hold to 3000.

AWOS-3P 118.325	ANCHORAGE CENTER 119.65 363.25	KOTZEBUE RADIO 122.25	CTAF 122.8 0
---------------------------	--	---------------------------------	-------------------------------



CATEGORY	A	B	C	D
LPV DA		221-1	200 (200-1)	
LNAV/VNAV DA		271-1	250 (300-1)	
LNAV MDA		320-1	299 (300-1)	
CIRCLING	380-1 359 (400-1)	480-1 459 (500-1)	480-1½ 459 (500-1½)	580-2 559 (600-2)



AK, 31 OCT 2024 to 26 DEC 2024

AK, 31 OCT 2024 to 26 DEC 2024