

APP CRS	Rwy Idg	4900
221°	TDZE	3615
	Apt Elev	3622

RNAV (GPS) RWY 22

ELKHART-MORTON COUNTY (EHA)

RNP APCH-GPS.

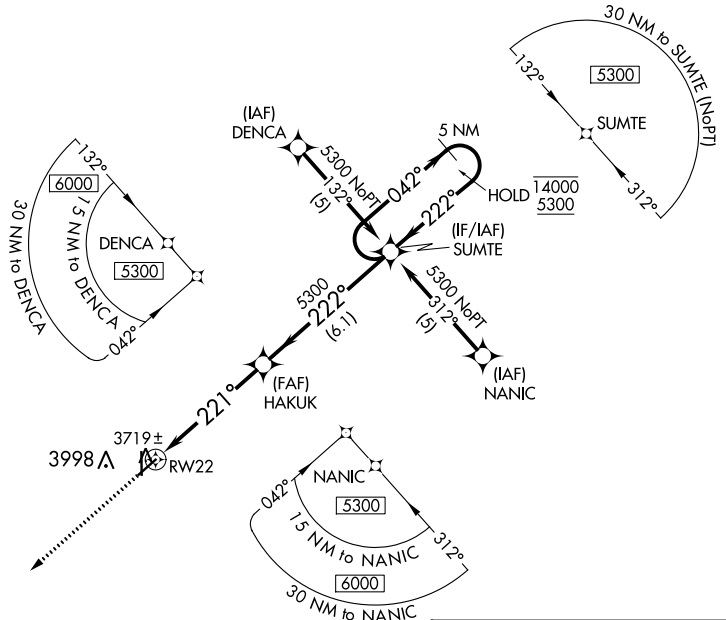
V
A Rwy 22 helicopter visibility reduction below 3/4 SM NA.

MISSED APPROACH: Climb to 6000 direct RIGGO and hold.

AWOS-3P
118.025

KANSAS CITY CENTER
134.0 257.625

UNICOM
122.8 (CTAF) 0

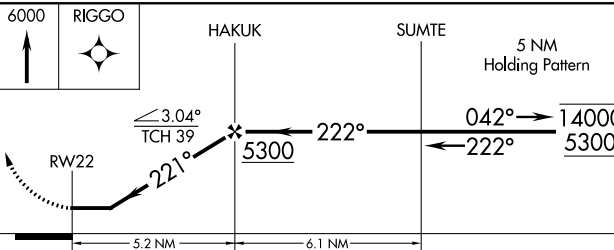
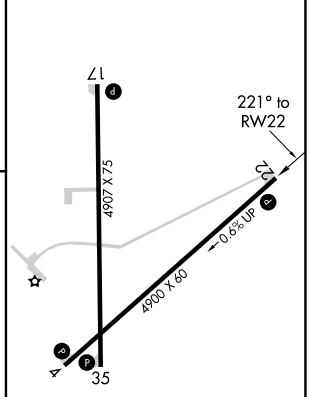


NC-2, 08 AUG 2024 to 05 SEP 2024

NC-2, 08 AUG 2024 to 05 SEP 2024



ELEV 3622	TDZE 3615
-----------	-----------



CATEGORY	A	B	C	D
LNAV MDA	4100-1	485 (500-1)	4100-1 3/8 485 (500-1 3/8)	NA

MIRL Rwy 17-35 and 4-22 0