

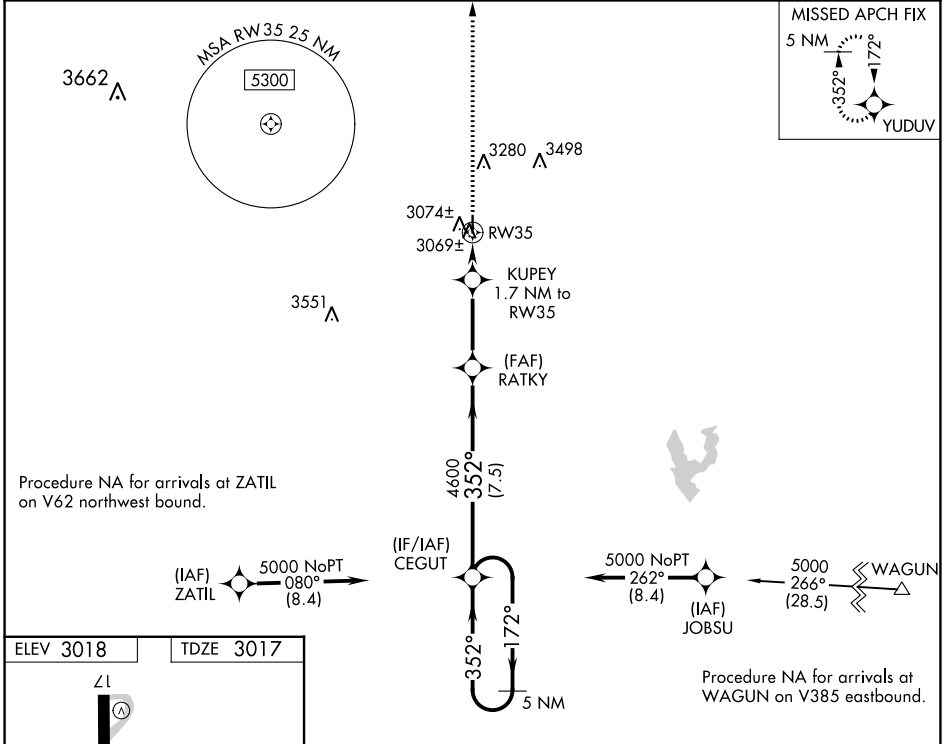
WAAS CH 53423 W35A	APP CRS 352°	Rwy Idg TDZE Apt Elev	3600 3017 3018
--	------------------------	-----------------------------	---

RNAV (GPS) RWY 35

CROSBYTON MUNI (8F3)

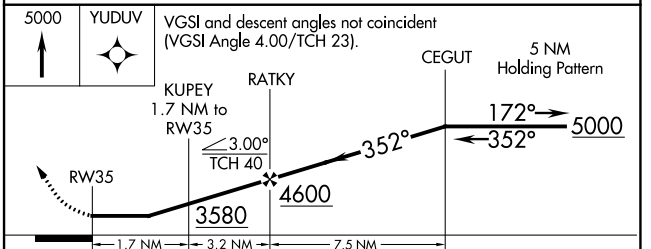
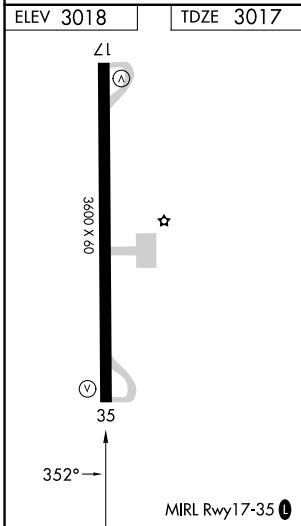
RNP APCH.	Use Lubbock altimeter setting. Procedure NA at night. Rwy 35 helicopter visibility reduction below 1 SM NA.	MISSED APPROACH: Climb to 5000 direct YUDUV and hold.
-----------	--	---

LBB ASOS 125.3	LUBBOCK APP CON 119.2 351.8	UNICOM 122.8 (CTAF) 0
--------------------------	---------------------------------------	---------------------------------



Procedure NA for arrivals at ZATIL on V62 northwest bound.

Procedure NA for arrivals at WAGUN on V385 eastbound.



CATEGORY	A	B	C	D
LP MDA	3440-1	423 (500-1)	3440-1¼ 423 (500-1¼)	NA
LNAV MDA	3440-1	423 (500-1)	3440-1¼ 423 (500-1¼)	NA
CIRCLING	3500-1 482 (500-1)	3740-1 722 (800-1)	3920-2¾ 902 (1000-2¾)	NA

SC-2, 31 OCT 2024 to 28 NOV 2024

SC-2, 31 OCT 2024 to 28 NOV 2024