

LOC I-RGK <b>110.1</b>	APP CRS <b>091°</b>	Rwy Idg TDZE Apt Elev	<b>5010</b> <b>778</b> <b>778</b>
---------------------------	------------------------	-----------------------------	---

# ILS or LOC RWY 9

RED WING RGNL (RGK)

**ADF Required.** When local altimeter setting not received, use South St. Paul altimeter setting; increase S-ILS 9 DA to 1050 feet; increase all MDA 80 feet and visibility S-LOC 9 Cat C/D 1/8 SM and Circling Cat B/C 1/4 SM. For inop MALSRS, increase S-LOC 9 Cat C/D visibility 1/4 mile. For inop MALSRS when using South St. Paul altimeter setting, increase S-ILS 9 all Cats visibility 3/8 mile, and S-LOC 9 Cat C/D visibility 3/4 mile.

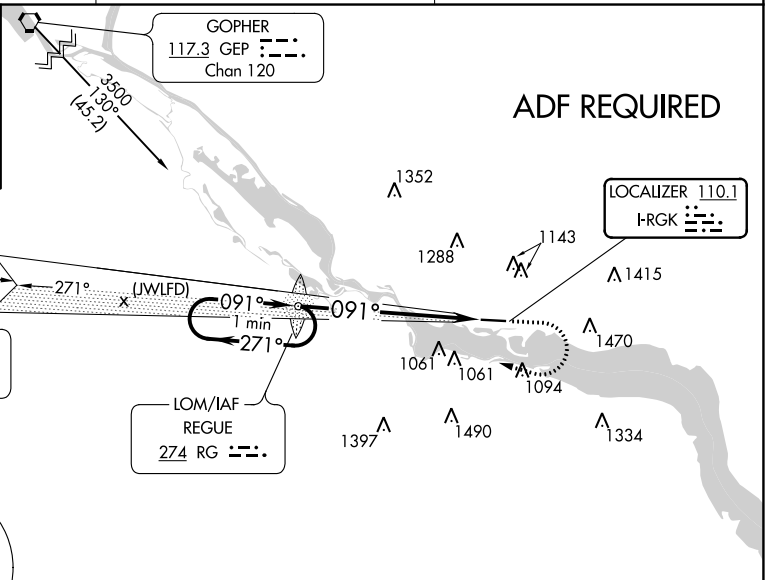
**MALSRS**  
**MISSED APPROACH:**  
 Climb to 2000 then climbing right turn to 3000 direct REGUE LOM and hold.

AWOS-3 <b>119.25</b>	MINNEAPOLIS APP CON <b>121.2 335.65</b>	UNICOM <b>123.05 (CTAF)</b>
-------------------------	--	--------------------------------

**ALTERNATE MISSED APCH FIX**

**FARMINGTON**  
 115.7 FGT  
 Chan 104

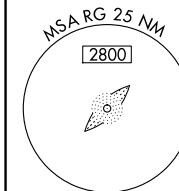
265° R-085  
 085°



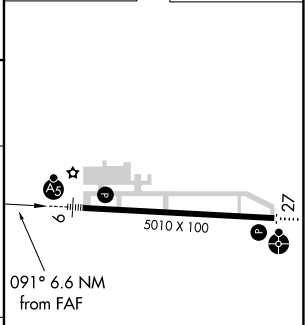
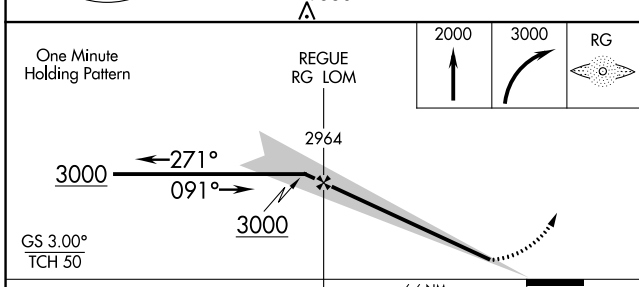
3000 089° (23)

**FARMINGTON**  
 115.7 FGT  
 Chan 104

LOM/IAF  
 REGUE  
 274 RG



ELEV 778	TDZE 778
----------	----------



CATEGORY	A	B	C	D
S-ILS 9	978-1/2		200 (200-1/2)	
S-LOC 9	1520-1/2 742 (800-1/2)	1520-3/4 742 (800-3/4)	1520-1 3/4 862 (900-2 1/2)	742 (800-1 3/4)
CIRCLING	1520-1 742 (800-1)	1640-2 1/2 1002 (1100-3)		1780-3

HIRL Rwy 9-27

FAF to MAP 6.6 NM

Knots	60	90	120	150	180
Min:Sec	6:36	4:24	3:18	2:38	2:12

NC-1, 31 OCT 2024 to 28 NOV 2024

NC-1, 31 OCT 2024 to 28 NOV 2024