

WHEATON, MINNESOTA

AL-6660 (FAA)

23250

WAAS CH 86730 W34A	APP CRS 339°	Rwy Idg TDZE Apt Elev	3298 1023 1023
--	------------------------	-----------------------------	---

RNAV (GPS) RWY 34

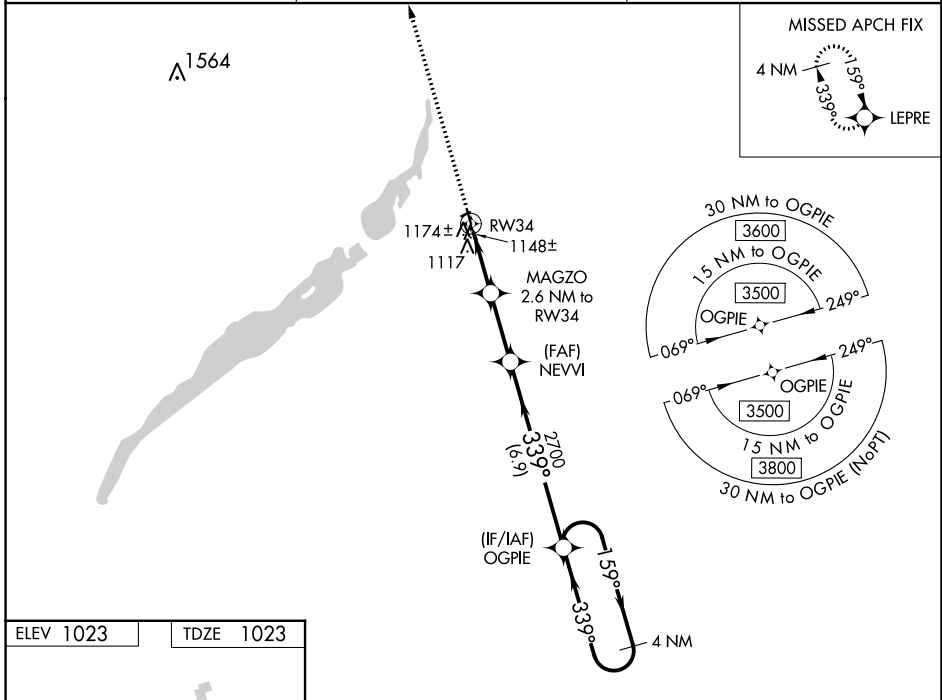
WHEATON MUNI (ETH)

RNP APCH - GPS.

⚠ Rwy 34 helicopter visibility reduction below $\frac{3}{4}$ SM NA. When local altimeter setting not received, use Wahpeton altimeter setting and increase all MDA 80 feet, increase LP and LNAV Cat C visibility to $\frac{3}{8}$ SM. Circling NA to Rwy 6 and 24.

MISSED APPROACH: Climb to 3500 direct LEPRE and hold.

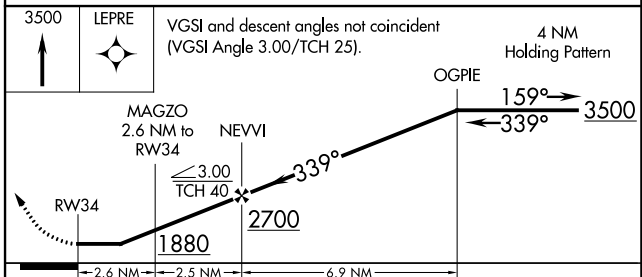
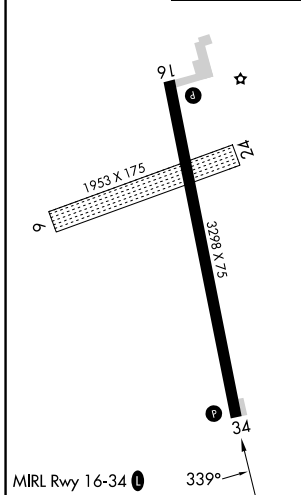
AWOS-3 118.775	MINNEAPOLIS CENTER 126.1 269.2	UNICOM 122.8 (CTAF) 0
--------------------------	--	---------------------------------



NC-1, 08 AUG 2024 to 05 SEP 2024

NC-1, 08 AUG 2024 to 05 SEP 2024

ELEV 1023	TDZE 1023
-----------	-----------



CATEGORY	A	B	C	D
LP MDA	1400-1 377 (400-1)			NA
LNAV MDA	1440-1	417 (500-1)	1440-1 $\frac{1}{8}$ 417 (500-1 $\frac{1}{8}$)	NA
CIRCLING	1480-1	457 (500-1)	1500-1 $\frac{1}{2}$ 477 (500-1 $\frac{1}{2}$)	NA

WHEATON, MINNESOTA
Orig-C 07SEP23

45°47'N-96°33'W

WHEATON MUNI (ETH) RNAV (GPS) RWY 34